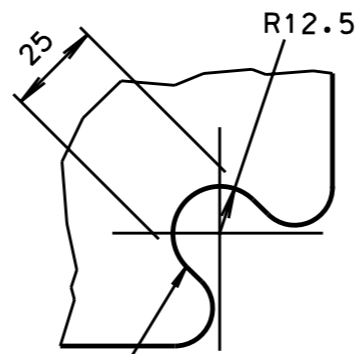
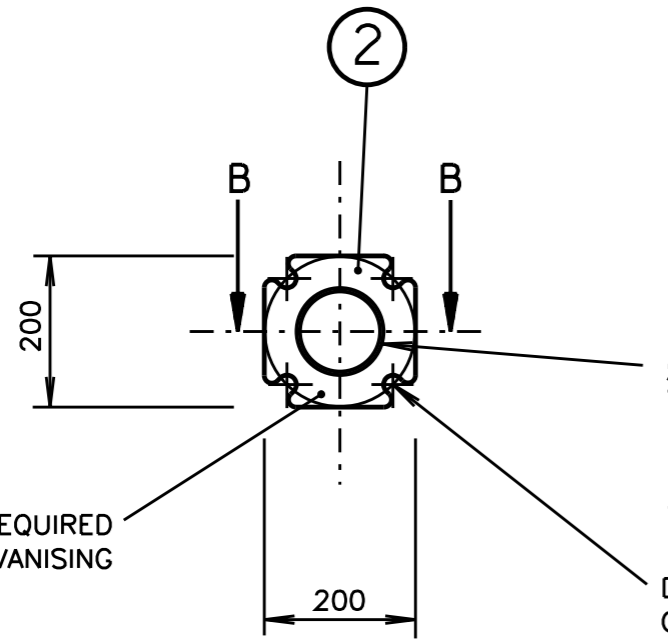


POST REQUIRED	
DIM X	SUPPLY CAT NO
3100	
4000	



25 WIDE SLOTS
LOCATION & ALIGNMENT OF HOLES TO BE WITHIN ± 1 OF TRUE POSITION.

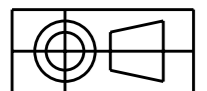
DETAIL A
1 : 2



$\varnothing 115$ HOLE IN BASEPLATE TO SUIT ITEM 1. DEBURR & REMOVE SHARP EDGE OF HOLE IN PLATE & TUBE.

DRILL 4 HOLES $\varnothing 25$ EQUISPACED ON 200mm PCD. LOCATION AND ALIGNMENT OF HOLES TO BE WITHIN ± 1 OF TRUE POSITION. REFER TO DETAIL A.

1 HOLE $\varnothing 10$ REQUIRED FOR GALVANISING



DIMENSIONS IN MILLIMETRES

NOTES:

- MANUFACTURE OF POST SHALL BE IN ACCORDANCE WITH SPEC P/6 & AS 2339.
- THE SURFACE OF THE TUBULAR SECTION SHALL BE SMOOTH & FREE FROM DAGS OR SHARP PROJECTIONS CAUSED BY THE GALVANISING PROCESS.
- POSTS TO BE SUPPLIED WITH ITEMS 3, 4, 5 & 6 FITTED AS SHOWN IN SECTION B-B. HEAD OF ITEM 3 TO BE FLUSH WITH POST AFTER GALVANISING.
- MANUFACTURERS IDENTIFICATION & DATE OF MANUFACTURE SHALL BE LEGIBLY & DURABLY MARKED.

ITEM	DESCRIPTION	MATERIAL	FINISH	QTY	REMARKS
6	FLAT WASHER M6	STAINLESS STEEL	NATURAL	3	TO AS 1237
5	SPRING WASHER M6			1	TO AS 1968
4	HEX NUT M6			3	TO AS 1112
3	CSK HEAD SCREW M6 x 30			1	TO AS 1427
2	BASE PLATE	MS GRADE 350	HOT DIP GALVANISED TO AS 1650	1	
1	STEEL TUBE DN 100 - MEDIUM	STEEL		1	TO AS 1074

<p>A ORIGINAL ISSUE</p> <p>B ISSUE: NOTE 4 ADDED. BASE PLATE WAS 330x330.</p> <p>C ISSUE: 25.11.09 BASE PLATE SIZE WAS 250x250, MATERIAL WAS 16 THICK MS 250 GRADE.</p>	<p>REFERENCE DRAWINGS</p> <p>FOOTING VC002-59</p> <p>HOLDING BOLTS VC002-60</p>	<p>ROADS AND TRAFFIC AUTHORITY OF NSW</p> <p>TRAFFIC SIGNALS</p> <p>SCALE 1:10 OR AS SHOWN</p> <p>SUPERSEDES:</p> <p>DRAWN EB</p> <p>CHECKED RVC 94-02-28</p> <p>PASSED B TAYLOR 1994-03-01</p>	<p>APPROVED: 1994-03-03</p> <p>F HULSCHER</p> <p>MANAGER STANDARDS & QUALITY</p> <p>ISSUE A B C</p>			
				<p>TYPE 7 POST MECHANICAL DETAILS</p>		<p>VM202-15</p>
				<p>DIMENSIONS IN MILLIMETRES</p>		<p>VM202-15</p>