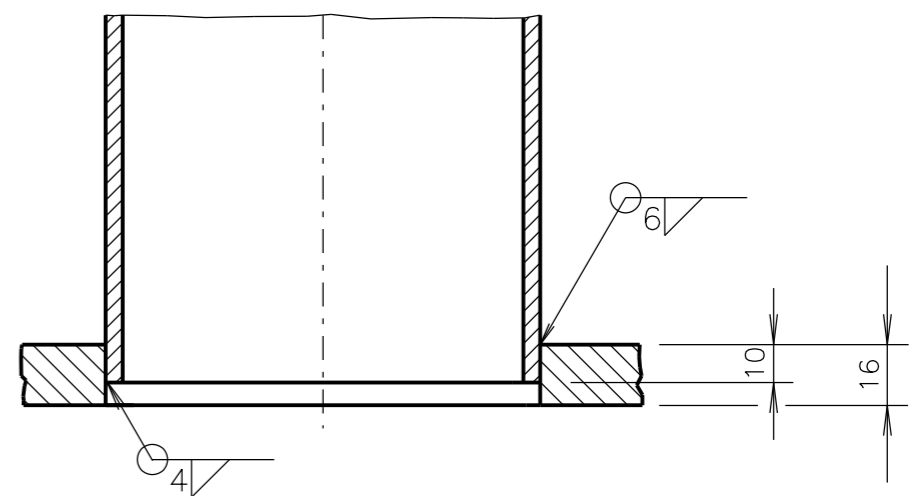
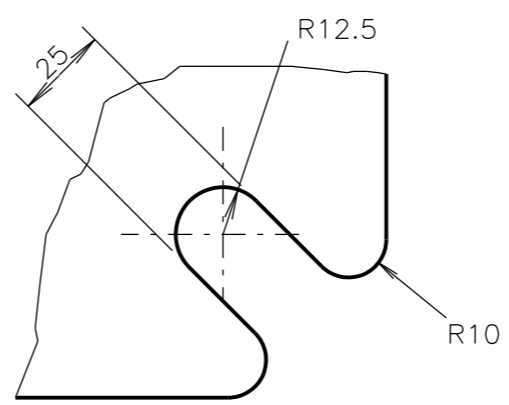


3 4 5 6
(SEE NOTE 3)

SECTION B-B
1 : 1



SECTION C-C
1 : 2

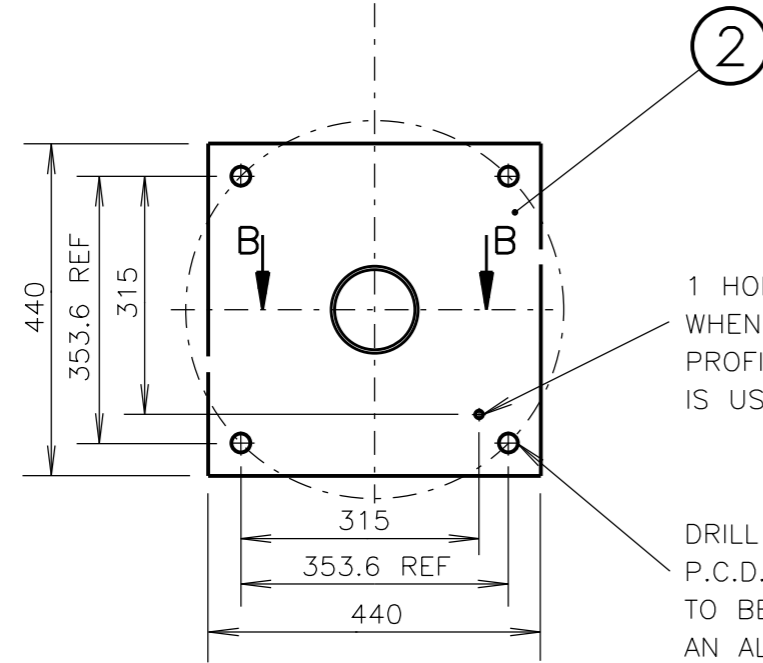


ALTERNATIVE PROFILE
DETAIL A
1 : 2

POST REQUIRED	
DIM X	SUPPLY CAT NO
3200	18233975
4100	18234009
4600	18233983
5200	18233940

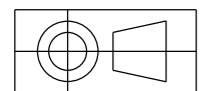
NOTES:

- MANUFACTURE OF POST SHALL BE IN ACCORDANCE WITH SPEC P/6 & AS 2339.
- THE SURFACE OF THE TUBULAR SECTION SHALL BE SMOOTH & FREE FROM DAGS OR SHARP PROJECTIONS CAUSED BY THE GALVANISING PROCESS.
- POSTS TO BE SUPPLIED WITH ITEMS 3, 4, 5 & 6 FITTED AS SHOWN IN SECTION B-B. HEAD OF ITEM 3 TO BE FLUSH WITH POST AFTER GALVANISING.



1 HOLE Ø10 REQD ONLY WHEN ALTERNATIVE PROFILE (DETAIL A) IS USED

DRILL 4 HOLES Ø25 EQUISPACED ON 500mm P.C.D. LOCATION & ALIGNMENT OF HOLES TO BE WITHIN ±1 OF TRUE POSITION. AN ALTERNATIVE BASE PLATE CORNER PROFILE AS SHOWN IN DETAIL A MAY BE USED.



DIMENSIONS IN MILLIMETRES

6	FLAT WASHER 06	STAINLESS STEEL	NATURAL	3	TO AS 1237
5	SPRING WASHER 06			1	TO AS 1968
4	HEX NUT M6			3	TO AS 1112
3	CSK HEAD SCREW M6 x 30			1	TO AS 1427
2	BASE PLATE	MS GRADE 250	HOT DIP GALVANISED TO AS 1650	1	
1	STEEL TUBE DN 100 - MEDIUM	STEEL		1	TO AS 1074
ITEM	DESCRIPTION	MATERIAL	FINISH	QTY	REMARKS

X ISSUE 27-04-92
J/1 TC 2364
PLAN REDRAWN
SECTION C-C FILLET
WELD 4 WAS 6
DIM 'X' WAS 'A'
ITEMS 5 & 6 ADDED
IN NOTE 3 MARKING
DETAILS DELETED
PRESENT DETAILS
ADDED
EB RVC BWT

REFERENCE DRAWINGS	
FOOTING	VC002-71

ROADS AND MARITIME SERVICES
TRAFFIC SIGNALS

TYPE 2 POST
MECHANICAL DETAILS

SCALE	
1:10	OR AS SHOWN
SUPERSEDES: ISSUE W	
DRAWN	LP 28-03-83
CHECKED	RB
PASSED	—

APPROVED: 8-05-84	
F. HULSCHER	
MANAGER STANDARDS & QUALITY	
ISSUE	X
VM202-1	