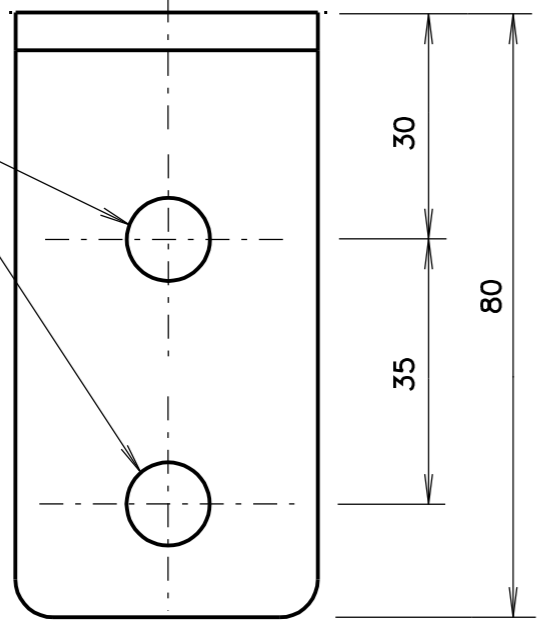
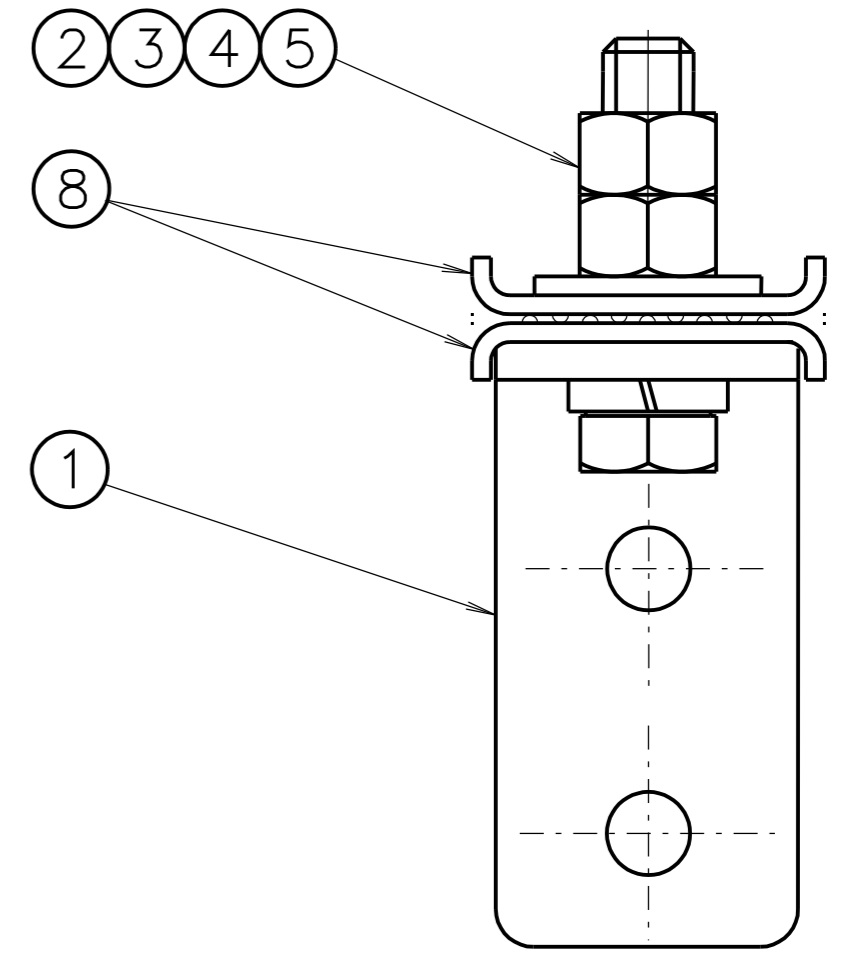
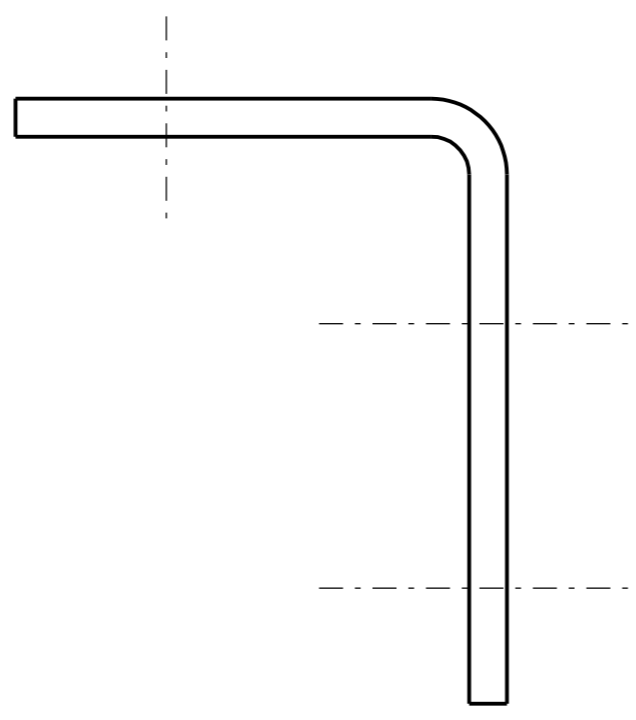
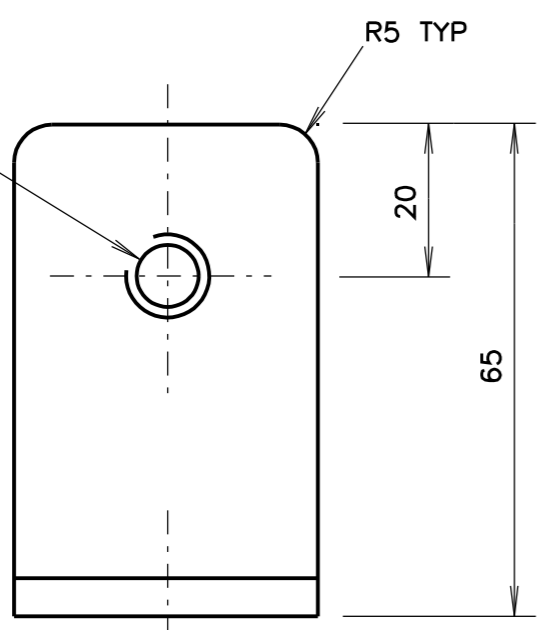


2 HOLES Ø11



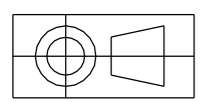
1 TAPPED HOLE M12



ASSEMBLY

NOTES

1. TOLERANCE ± 1 EXCEPT THAT THE FLAT STEEL OF BRACKET IS TO COMPLY WITH AS 3679.
2. ALL BURRS, SHARP EDGES AND WELDING SCALE TO BE REMOVED BEFORE GALVANISING.
3. ITEM HOT DIP GALVANISED IN ACCORDANCE WITH AS 1650.
4. ON DELIVERY ALL ITEMS TO BE FULLY ASSEMBLED AS SHOWN EXCEPT COACH BOLTS AND FLAT WASHERS (ITEM 6 & 7) TO BE PLACED INTO A STRONG BAG AND SECURELY ATTACHED TO EACH ASSEMBLY PRIOR TO DELIVERY.
5. A PAIR OF LOCK WASHERS (ITEM 8) SHALL BE FITTED TO EACH LUG ASSEMBLY (DIMPLE TO DIMPLE). LOCK WASHERS ARE AVAILABLE FROM BOB PANICH CONSULTANCY RYDE OR ALDRIDGE ELECTRICAL INDUSTRIES RHODES.



DIMENSIONS IN MILLIMETRES

8	LOCK WASHER (REFER TO PLAN VM200-24)	STAINLESS STEEL	NATURAL	2
7	HEX HD COACH SCREW M10 x 50 TO AS 1393 (SEE NOTE 4)	MILD STEEL	GALV TO AS 1214	2
6	FLAT WASHER M10 TO AS 1237 (SEE NOTE 4)	MILD STEEL	GALV TO AS 1650	2
5	HEX NUT M12 TO AS 1112	MILD STEEL	GALV TO AS 1214	2
4	SPRING WASHER M12 TO AS 1968	SPRING STEEL	GALV TO AS 1650	1
3	FLAT WASHER M12 TO AS 1237	MILD STEEL	GALV TO AS 1650	1
2	HEX HD SCREW M12 x 60 TO AS 1111	MILD STEEL	GALV TO AS 1214	1
1	MOUNTING BRACKET 40 x 5 FLAT TO AS 3679	MILD STEEL	GALV TO AS 1650	1

ITEM	DESCRIPTION	MATERIAL	FINISH	QTY
------	-------------	----------	--------	-----

H ISSUE 17-10-96
 JI TC 2797 PLAN
 ALTERED. ITEM 8 &
 NOTE 5 ADDED.
 BRACKET REDESIGNED
 TO SUIT LOCK WASHER
 ITEM 7 WAS 40 LONG.
 ITEM 2 WAS 50 LONG.
 RVC BWT

SUPPLY CAT NO
 18230518

REFERENCE DRAWINGS	
LOWER LANT ASSY ON WOODEN POLES	VM015-16
TERMINAL BOX ASSY ON WOODEN POLES	VM015-21
LOCK WASHER	VM200-24

ROADS AND TRAFFIC AUTHORITY OF NSW
 TRAFFIC SIGNALS
LANTERN MOUNTING BRACKET FOR WOODEN POLES

SCALE	
FULL SCALE	
SUPERSEDES: ISSUE G	
DRAWN	CC 11-09-81
CHECKED	RB
PASSED	BT 29-09-81

APPROVED: 30-09-81	
F R HULSCHER	
MANAGER STANDARDS & QUALITY	
ISSUE	H
VM200-10	