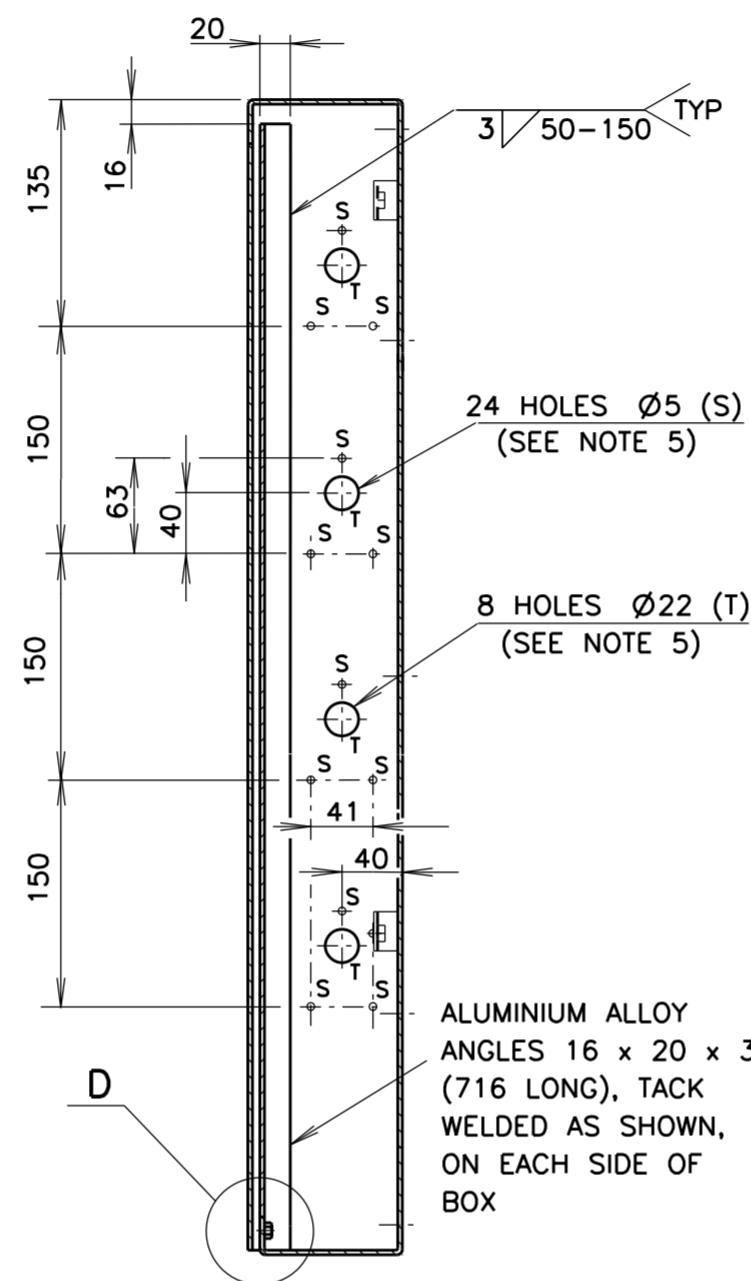
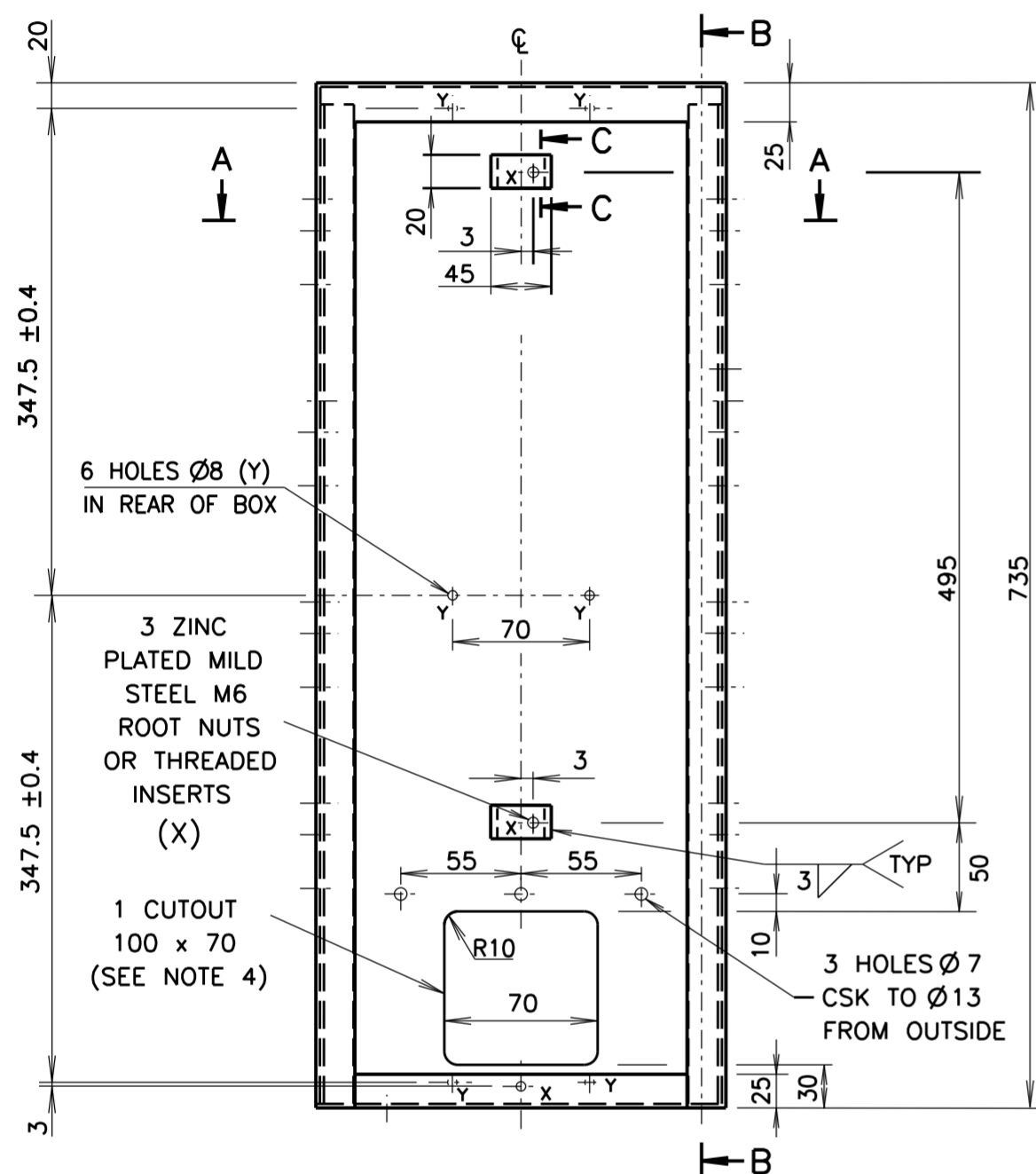
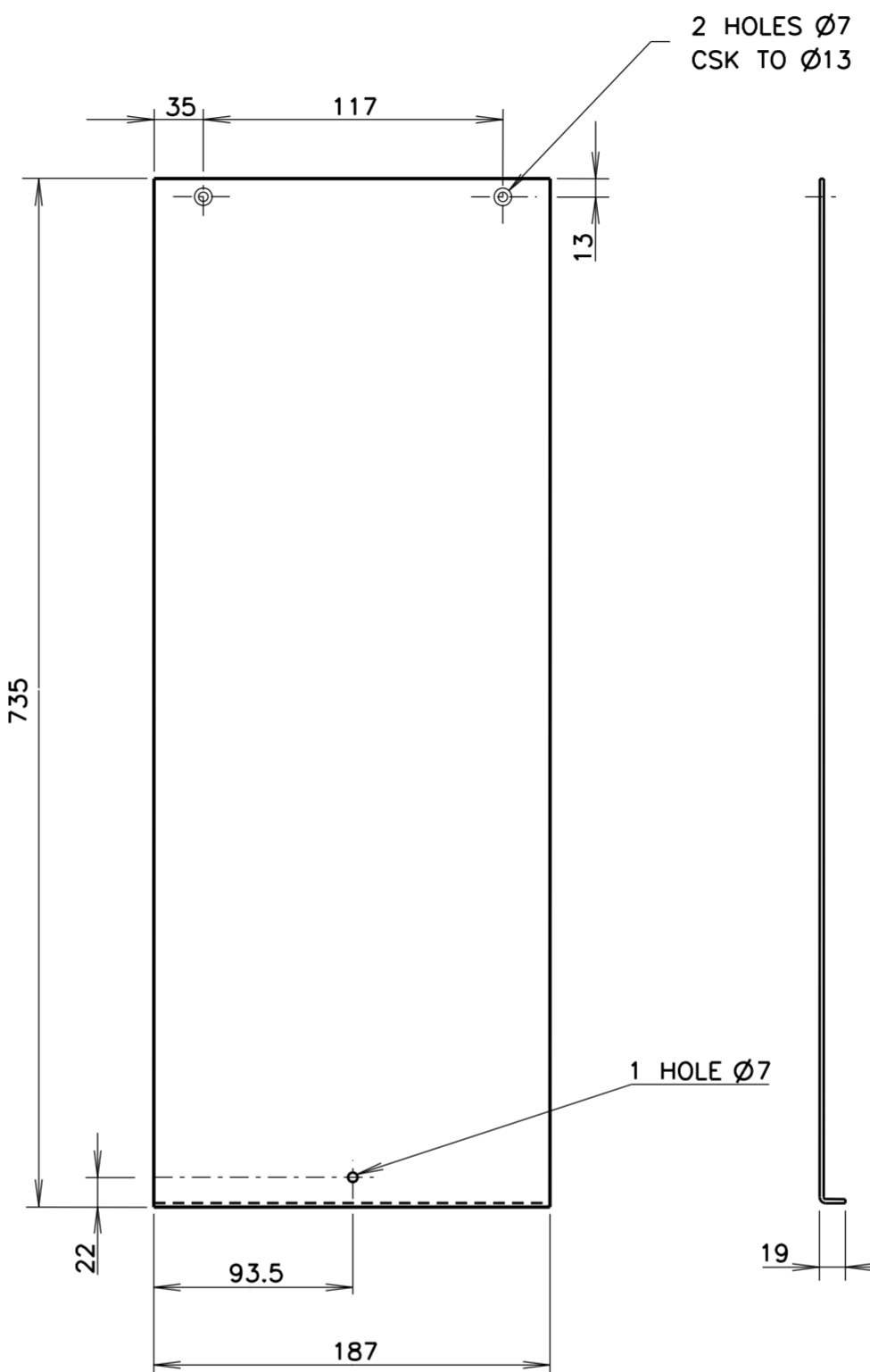


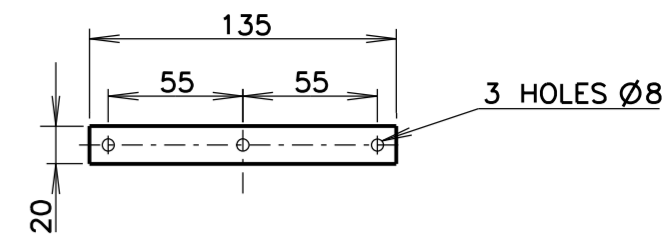
SECTION A-A



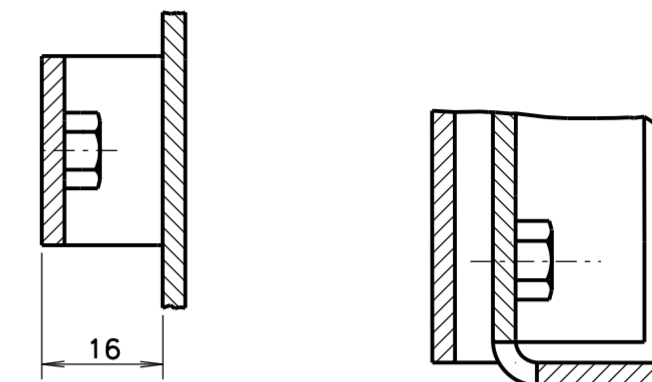
SECTION B-B



SLIDING COVER DETAILS



CABLE CLAMPING STRAP DETAILS
QUANTITY REQUIRED: 1 PER BOX



SECTION C-C
1 : 1

DETAIL D
1 : 1

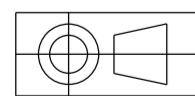
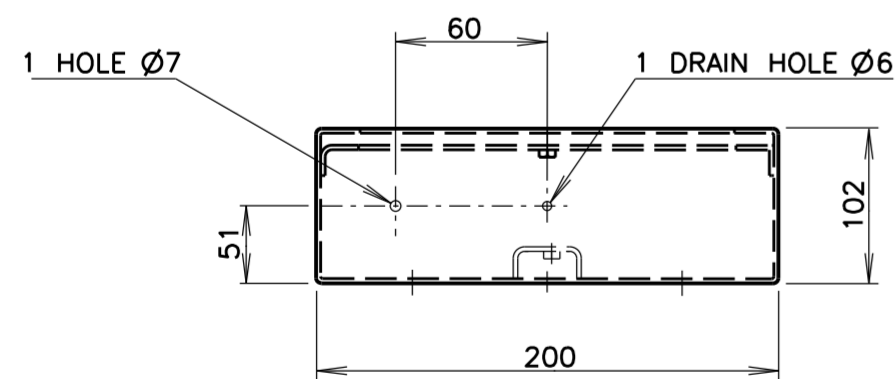
MATERIAL: 3mm ALUMINIUM ALLOY 5052 H34 OR 5152 H34, UNLESS OTHERWISE STATED.

FINISH: MATERIAL TO BE THOROUGHLY CLEANED, ETCHED, ALUMINIUM CHROMATED & DRIED BEFORE THE APPLICATION OF A POLYESTER POWDER COATING OF 50µm MINIMUM THICKNESS. THE COATING HAS TO HAVE A SATIN-SILVER FINISH & THE FULL PROCESS OF SUCH A COATING IS SUBJECT TO APPROVAL BY THE AUTHORITY. THE POWDER COATING IS ONLY NECESSARY ON EXTERNAL SURFACES. THREADED HOLES AND STUDS ARE TO BE PROTECTED DURING THE COATING PROCEDURE.

TOLERANCE: UNLESS OTHERWISE SHOWN
±0.4mm UP TO AND INCLUDING 120
±0.8mm ABOVE 120

NOTES

- BOX IS TO BE OF FOLDED & WELDED CONSTRUCTION.
- ALL WELDING TO BE 3mm CONTINUOUS FILLET, UNLESS OTHERWISE STATED.
- EXTERNAL WELDS TO BE GROUND FLUSH, SMOOTH & WEATHERPROOF.
- ALL SHARP CORNERS TO BE REMOVED & EDGES OF CUTOUTS TO BE ROUNDED.
- FOUR CABLE ENTRIES TO BE IN EACH SIDE OF BOX (DRILLING DETAILS SHOWN IN SECTION B-B).
- THE AREA SURROUNDING THE 6 X Ø8 HOLES (Y) AND THE Ø7 HOLE IN THE BOTTOM OF THE BOX TO BE FREE OF POWDER COATING/OVERSPRAY TO A DIA OF 15mm ON THE INSIDE OF THE BOX TO ENSURE EARTH CONTINUITY.



DIMENSIONS IN MILLIMETRES

A ORIGINAL ISSUE

B ISSUE 23-08-2016
TERMINAL BLOCK ASSEMBLY
REFERENCE WAS VM216-15,
DB
BWT

REFERENCE DRAWINGS		DRAWN LC.	12-07-13
TERM BLOCK ASS'Y	VM015-43	CHECKED BWT.	15-07-13
TERM BOX ASSEMBLY	VM015-42	PASSED BWT.	16-07-13
		APPROVED	
		S. SRIVASTAVA	
		DATE	16-07-13

ROADS & MARITIME SERVICES, NSW
TRAFFIC SIGNALS

MECHANICAL DETAILS OF TERMINAL BOX
FOR A TYPE 8 POST

SHEET SIZE	FILE NO	SCALE	SHEET NO
A2			
SCALE NTS. - UNLESS STATED OTHERWISE			
SUPERSEDES -		ISSUE / B	
REG NO			
VM015-41			