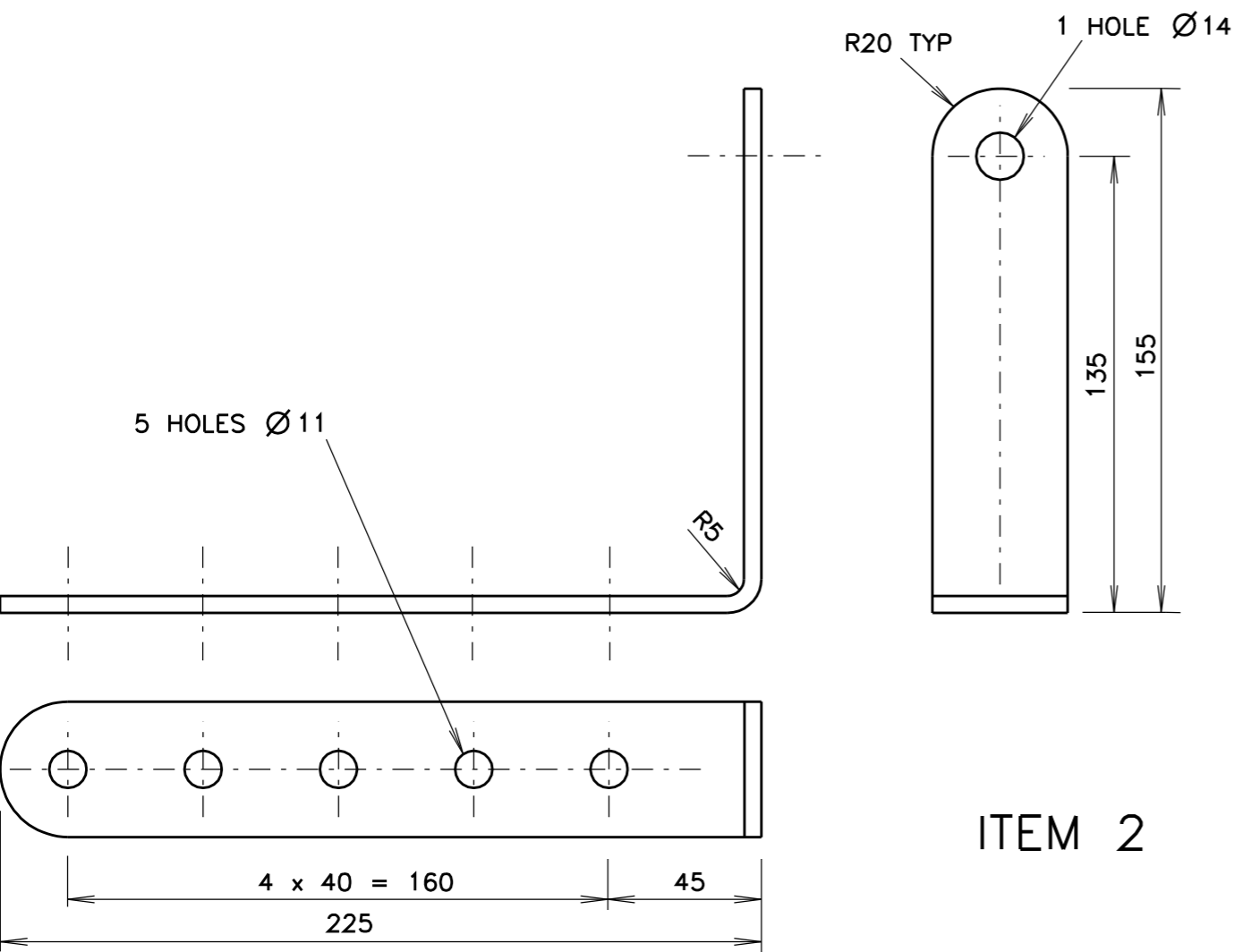
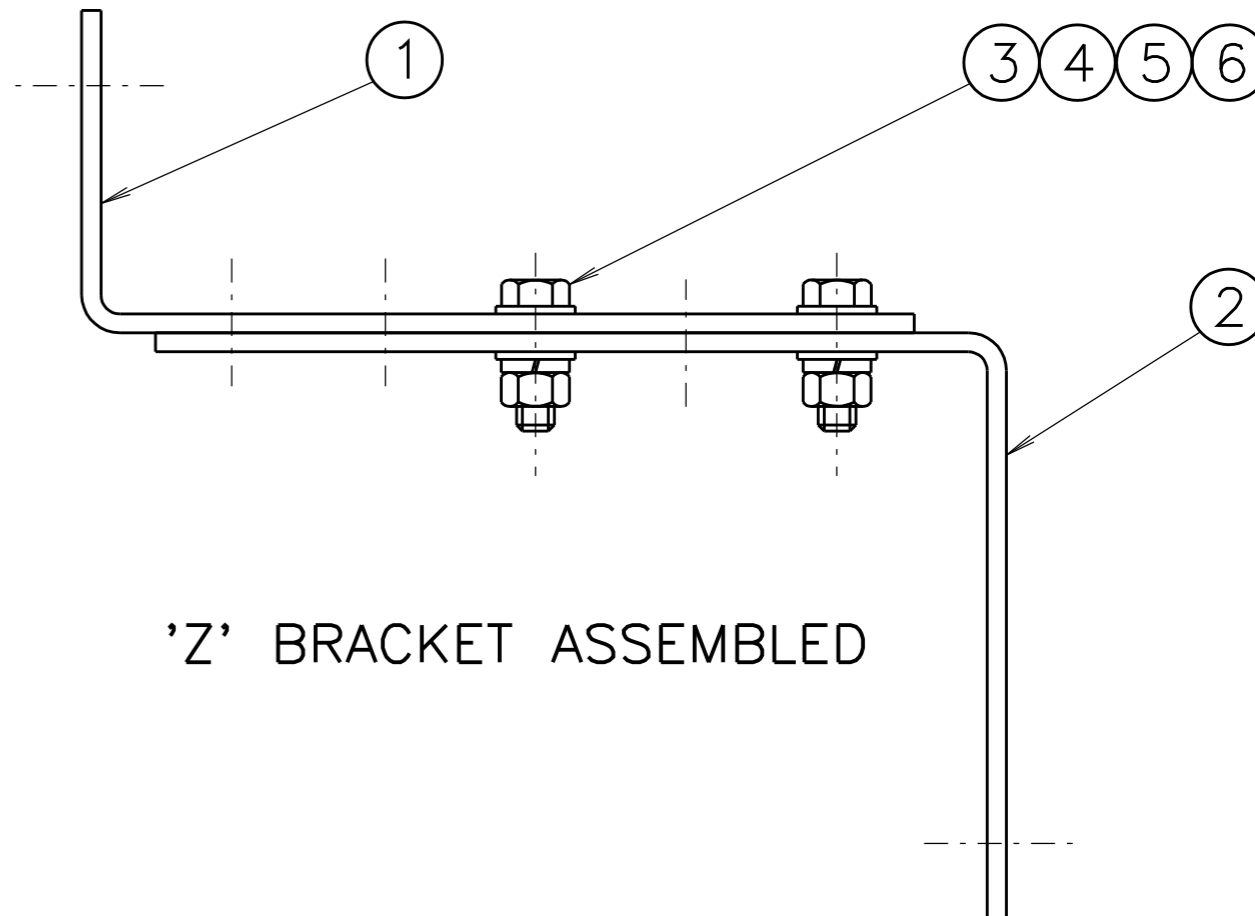


ITEM 1



ITEM 2

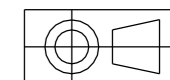


'Z' BRACKET ASSEMBLED

NOTES

1. DEBURR AND REMOVE SHARP CORNERS AND EDGES.
2. GENERAL TOLERANCE ± 2 AND FOR HOLE CENTRES & HOLES ± 0.5 .
3. ITEMS 1 & 2 TO BE GALVANISED IN ACCORDANCE WITH AS 1650.
4. ALL ITEMS SHALL BE SUPPLIED & FITTED (AS SHOWN ABOVE) BY THE MANUFACTURER.
5. ITEMS 1 AND 2 TOLERANCED IN ACCORDANCE WITH AS 3679.

DIMENSIONS ARE IN MILLIMETRES



ITEM	DESCRIPTION	MATERIAL	FINISH	QTY
6	FLAT WASHER M10 TO AS 1237	STAINLESS STEEL	NATURAL	4
5	SPRING WASHER M10 TO AS 1978	STAINLESS STEEL	NATURAL	2
4	HEX NUT M10 TO AS 1112	STAINLESS STEEL	NATURAL	2
3	HEX HEAD SCREW M10 X 30 TO AS 1111	STAINLESS STEEL	NATURAL	2
2	BRACKET ITEM 2 40 X 5 FLAT TO AS 3679	MILD STEEL	HD GALV TO AS 1650	1
1	BRACKET ITEM 1 40 X 5 FLAT TO AS 3679	MILD STEEL	HD GALV TO AS 1650	1

C ISSUE 9-10-96
 JI TC2352 BRACKET
 REDESIGNED TO SUIT
 NEW LANTERNS AND
 LOCK WASHERS.
 RVC BWT

REFERENCE DRAWINGS
 FIXED Z BKT 200mm VM012-12
 FIXED Z BKT 300mm VM012-13

SUPPLY CAT NO
 18230631

ROADS AND TRAFFIC AUTHORITY OF NSW
 TRAFFIC SIGNALS

ADJUSTABLE 'Z' BRACKET
 FOR 200mm LANTERNS

SCALE
 1 : 2

SUPERSEDES: ISSUE B

DRAWN LG 22-10-84
 CHECKED RB 23-10-84
 PASSED BT 11-12-84

APPROVED: 15-03-1985
 G LAKE
 ACTING MANAGER STDS & QLTY

ISSUE C

VM012-8