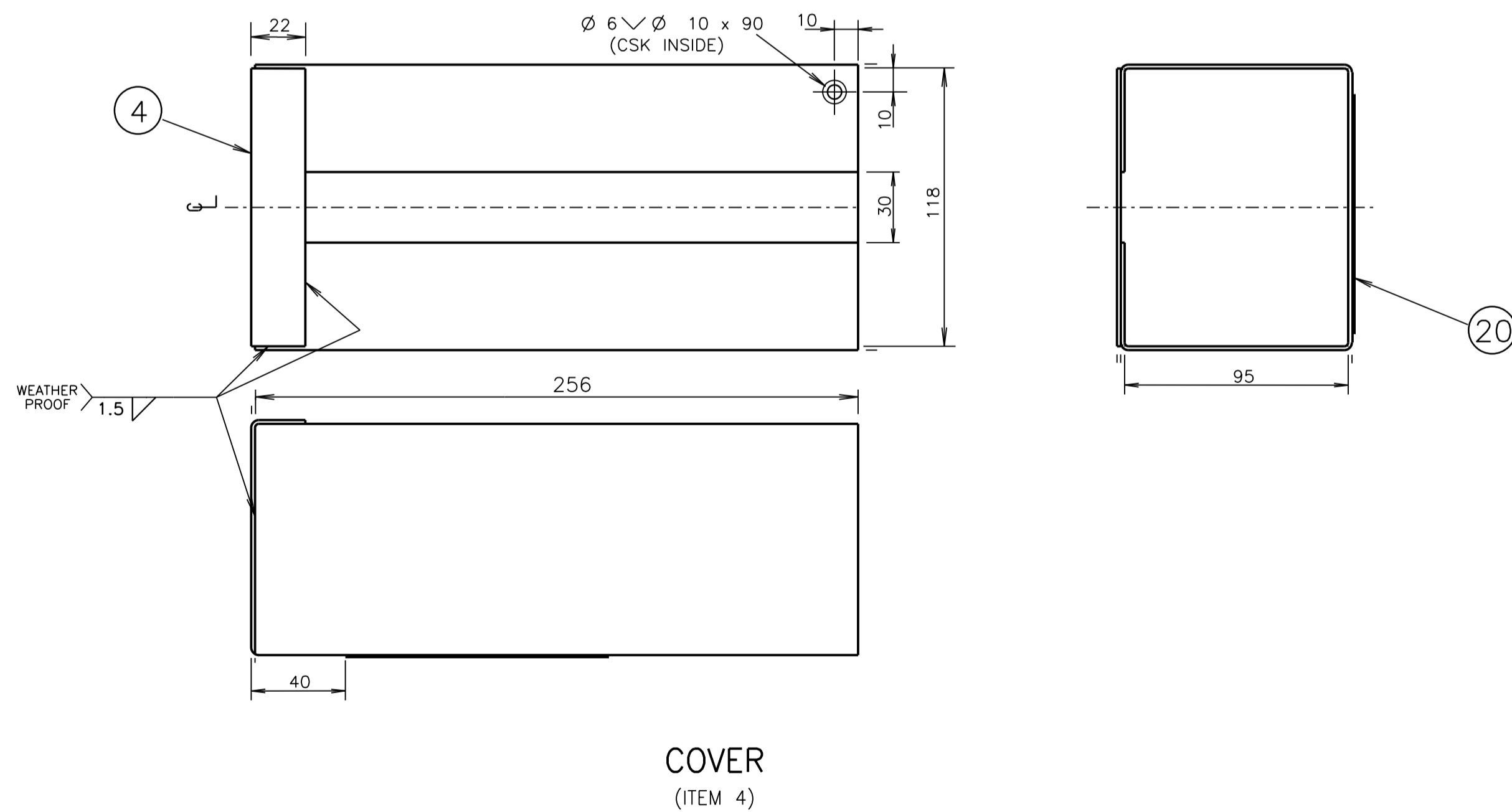
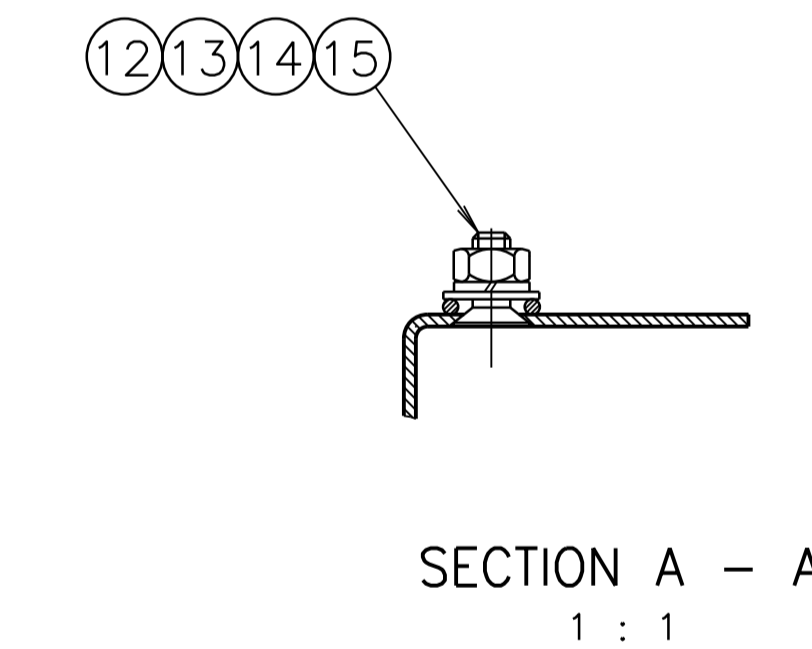
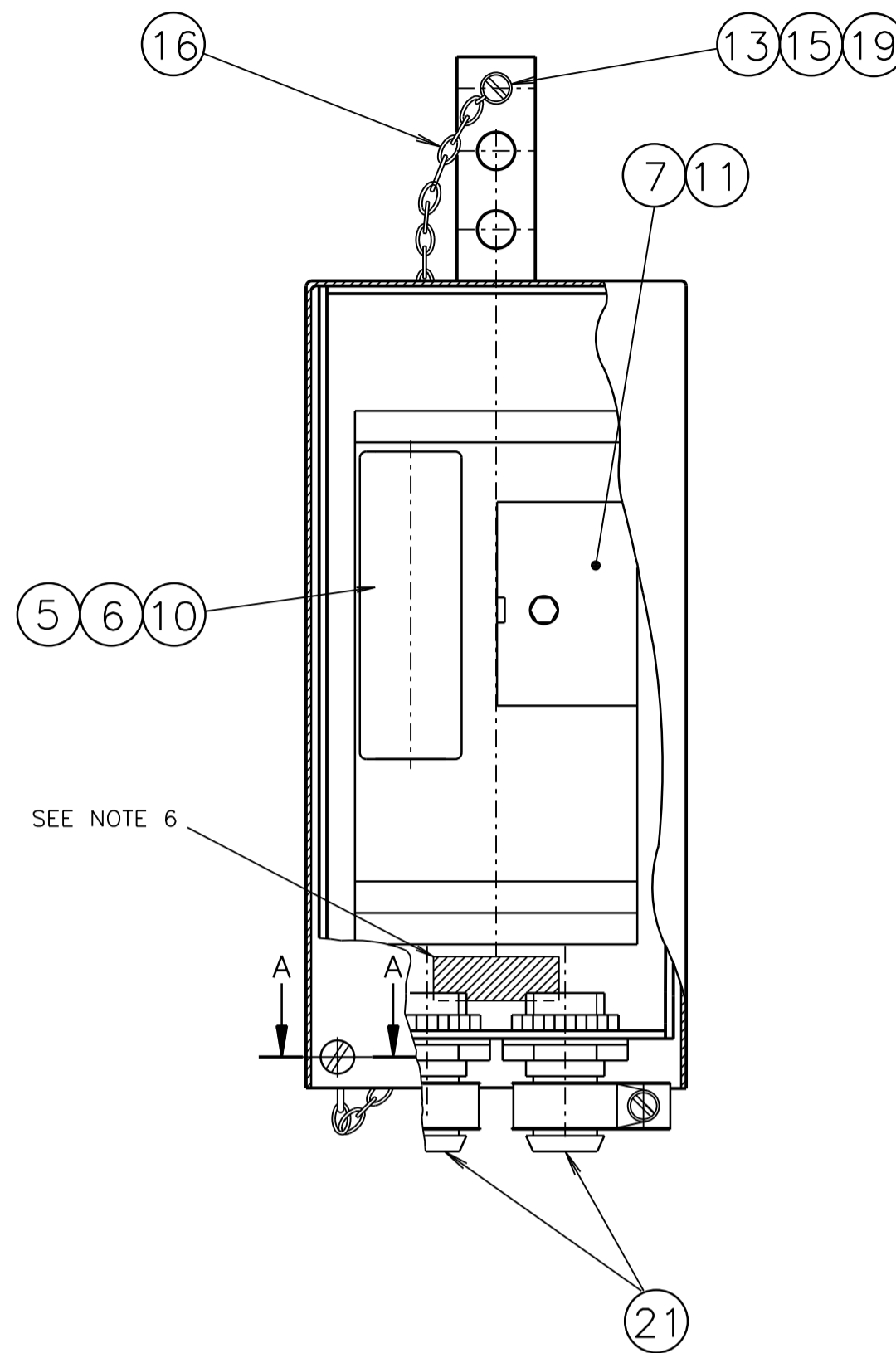
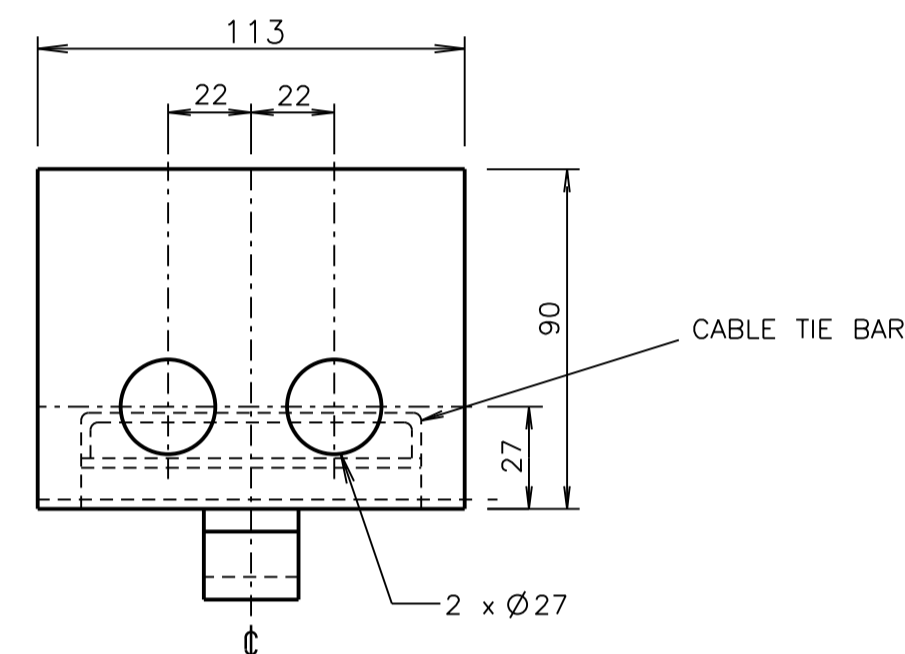


**BASE ASSEMBLY**  
(ITEMS 1,2,3,9 & 10)



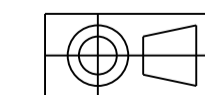
**COVER**  
(ITEM 4)

**NOTES**

- TOLERANCES: BETWEEN HOLE CENTRES AND HOLE DIAMETERS  $\pm 0.3\text{MM}$  UNLESS OTHERWISE STATED. GENERAL TOLERANCE  $\pm 1.0$ .
- NEUTRAL LINK TYPE SHALL BE FEDERAL CAT NO 90L5 OR SIMILAR.
- ALL THREADED HOLES TO BE PROTECTED DURING THE COATING PROCESS.
- ALL ITEMS ARE TO BE SUPPLIED FITTED BY MANUFACTURER EXCEPT 17 & 18 TO BE PLACED IN A PLASTIC BAG AND SECURED TO THE INSIDE OF ITEM 1.
- FUSE-LINK (ITEM 6) SHALL BE THE BOLTED CONNECTION TYPE A2, gG (GENERAL PURPOSE TYPE) RATED AT 32 AMPS, IN ACCORDANCE WITH AS 60269.2.1. FUSE-HOLDER (ITEM 5) SHALL BE THE FRONT CONNECTED TYPE, COOPER BUSSMANN - CAMASTER (CAT No. CM32F), IN ACCORDANCE WITH AS 60269.2.1 AND SUITABLE FOR ITEM 6.
- FUSE BOX BASE TO BE CLEARLY AND INDELIBLY MARKED TO INDICATE MANUFACTURER'S IDENTIFICATION AND DATE OF MANUFACTURE.
- FUSE BOXES TO BE INDIVIDUALLY PACKED FOR PROTECTION IN TRANSPORT AND CLEARLY MARKED EXTERNALLY WITH:
  - DESCRIPTION OF CONTENTS.
  - MANUFACTURER'S IDENTIFICATION.
  - RTA ORDER NO.
  - RTA CATALOGUE NO. 70010496
- THE FOLLOWING PROCESSES ARE TO BE CARRIED OUT ON THE ITEMS PRIOR TO COATING WITH RISLAN:
  - DEGREASE.
  - MECHANICAL OR CHEMICAL ETCHING.
  - APPLICATION OF A SUITABLE PRIMER.
 THESE PROCESSES ARE TO BE DONE TO GUIDELINES SET OUT BY THE BY THE MANUFACTURERS OF RISLAN.

ITEM	DESCRIPTION	MATERIAL/DRG NO	FINISH	QTY
21	CONDUIT TERMINATOR (25mm CLIPSAL; CAT NO 269/25)	NYLON		2
20	RETROREFLECTIVE LABEL	VM007-3		1
19	CHEESE HEAD SCREW M5 x 12	AS1427	CR STL	NATURAL 1
18	FLAT WASHER M10	AS1237	STL	GALV 2
17	COACH SCREW M10 x 50	AS1393	STL	GALV 2
16	SHORT LINK CHAIN 2mm		316 CR STL	NATURAL 1 x 370
15	SPRING WASHER M5	AS1968	316 CR STL	NATURAL 2
14	HEX NUT M5	AS1112	CR STL	NATURAL 1
13	FLAT WASHER M5	AS1237	CR STL	NATURAL 2
12	COUNTERSUNK SCREW M5 x 12	AS1427	CR STL	NATURAL 1
11	COUNTERSUNK SCREW M4 TO SUIT ITEM 7	AS1427	CR STL	NATURAL 2
10	COUNTERSUNK SCREW M5 TO SUIT ITEM 5	AS1427	CR STL	NATURAL 2
9	ROOT NUT M4		STL	Zn PLT 2
8	ROOT NUT M5		STL	Zn PLT 2
7	NEUTRAL LINK (90Amp, 5 terminal with 2 screws each)	TO AS 3000	SEE NOTE 2	1
6	FUSE-LINK (SEE NOTE 5)			1
5	FUSE-HOLDER (SEE NOTE 5)			1
4	COVER 1.6mm THICK			1
3	BASE FIXING STRAP 25mm x 6mm THICK	ALUMINIUM ALLOY 5052	RISLAN NYLON 11 BLACK SEMI-GLOSS	1
2	BASE MOUNTING PLATE 2.5mm THICK	H34 OR 5251 H34	PLASDIP P/L OR PETER SNELL P/L	1
1	BASE 2.5mm THICK			1

DIMENSIONS IN MILLIMETRES



V. ISSUE 22-05-2008  
PLAN WAS ON A2 SHT.  
ITEM 1 WAS 196 LONG.  
ITEM 2 WAS 115 LONG.  
ITEM 4 WAS 212 LONG.  
ADDED CABLE TIE BAR.  
IH BT  
W. ISSUE 02-12-2015  
ITEM 5 (COOPER-BUSSMANN FUSE HOLDER) DETAILS ADDED. IN NOTE 5, AUST STD WAS AS 2005.21.2.  
IH BT

REFERENCE DRAWINGS	DRAWN A. DIXON	ROADS AND MARITIME SERVICES TRAFFIC SIGNALS	SHEET SIZE	FILE NO	SCALE	SHEET NO
GENERAL ARRANGEMENT	VE500-1		A1		1 : 2	
RTA LOGO LABEL	VM007-3		SUPERSEDES: ISSUE U ISSUE <input checked="" type="checkbox"/> W			
RTA CATALOGUE NO.	70010496	POLE MOUNTING FUSE BOX	REG NO			
	APPROVED F. HULSCHER DATE 16-02-1983		VM007-2			

DATE	16-02-1983
------	------------