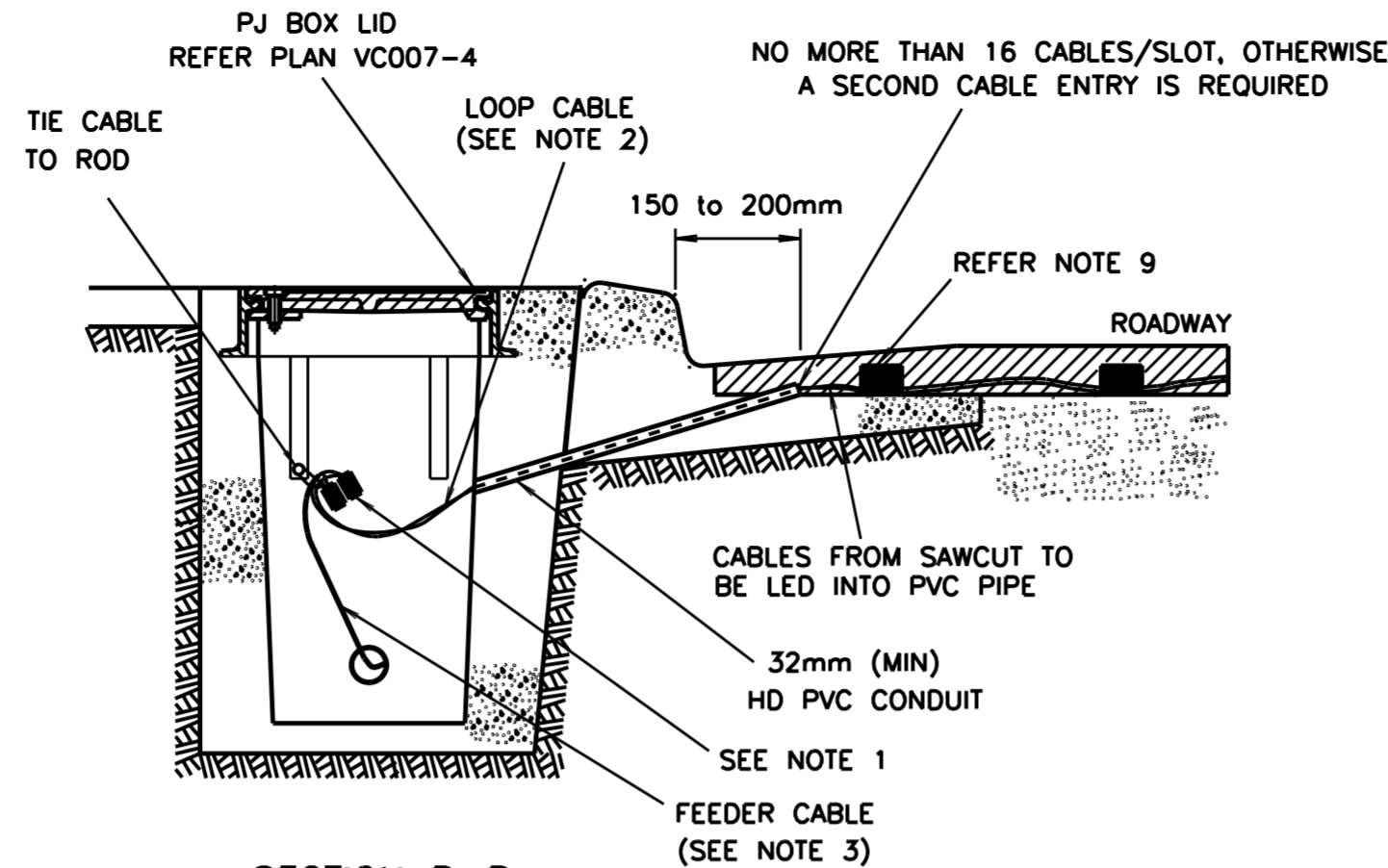
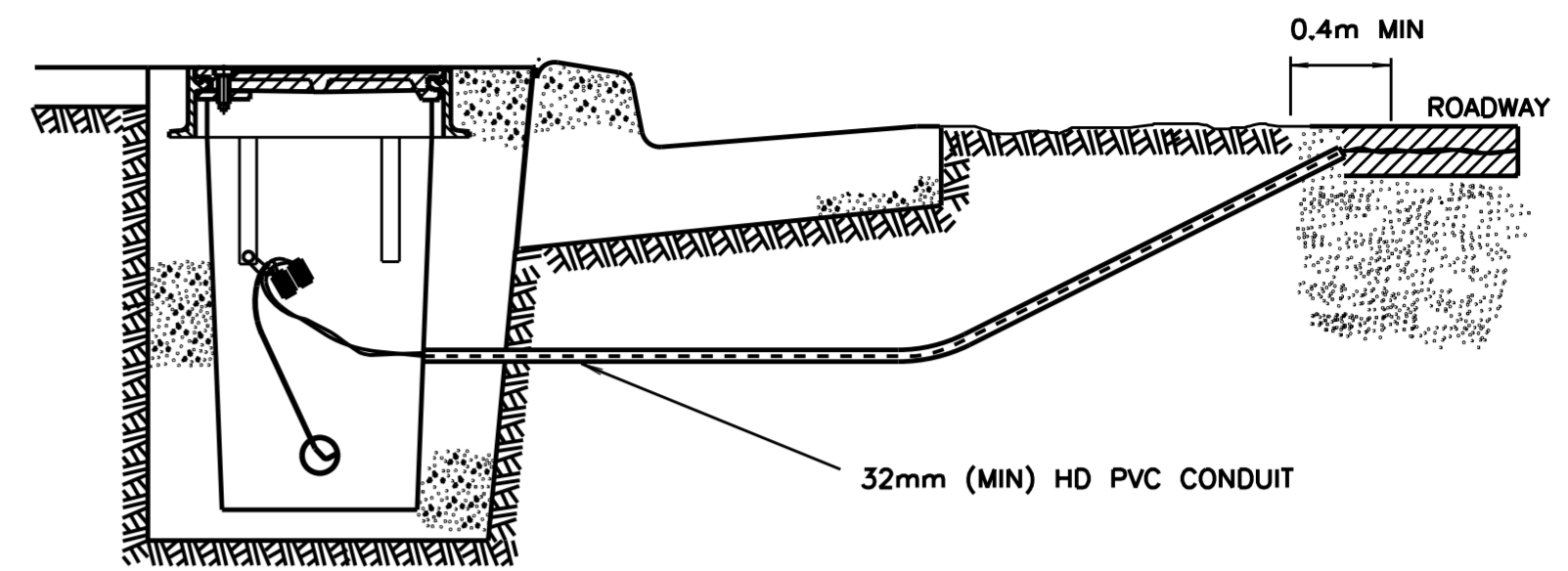


DETAIL D  
(SEE NOTE 8 & 9)

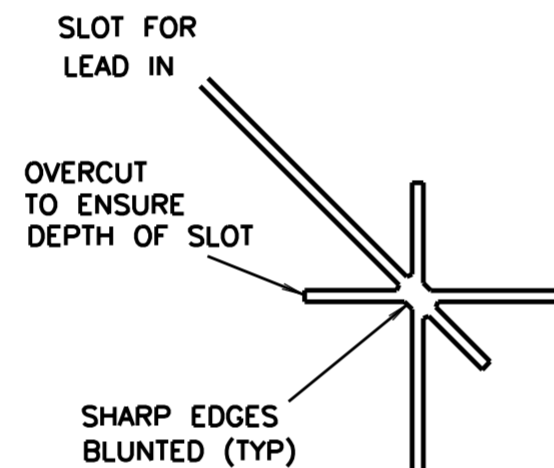


SECTION B-B  
SEALED SHOULDER

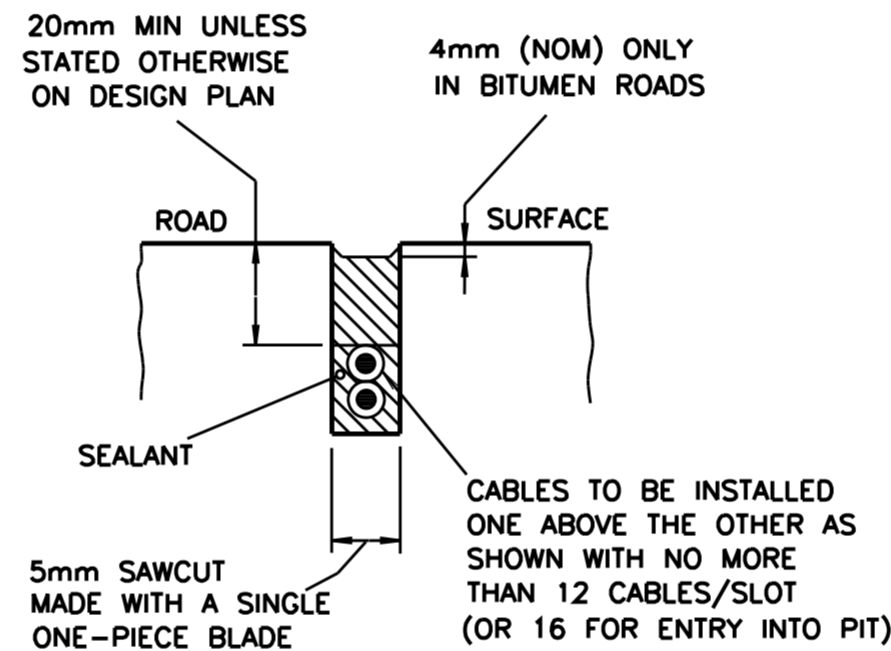


SECTION B-B  
UNSEALED SHOULDER

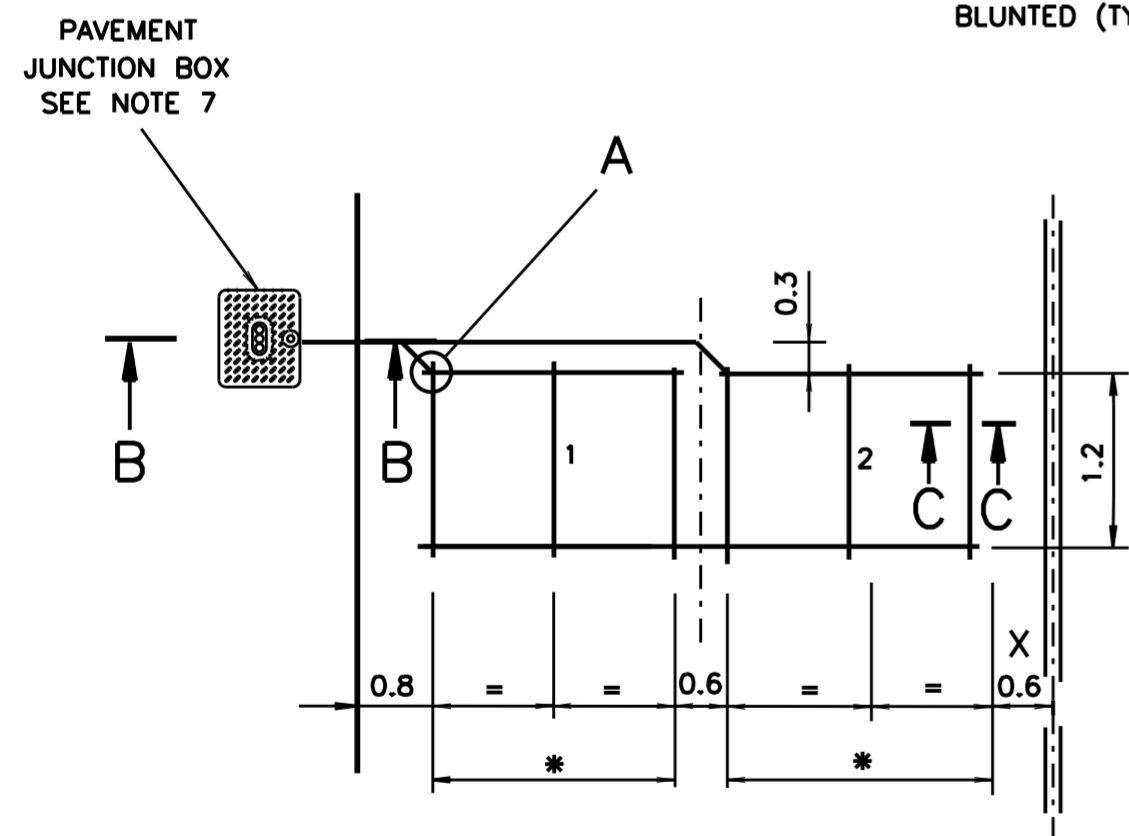
\* DIMENSION DERIVED FROM THE LANE WIDTH STATED ON DESIGN PLAN  
X 0.6m DISTANCE TO BE 0.3m WHEN THE LOOP IS BESIDE THE EDGE OF A RAISED MEDIAN OR PAINTED ISLANDS



DETAIL A

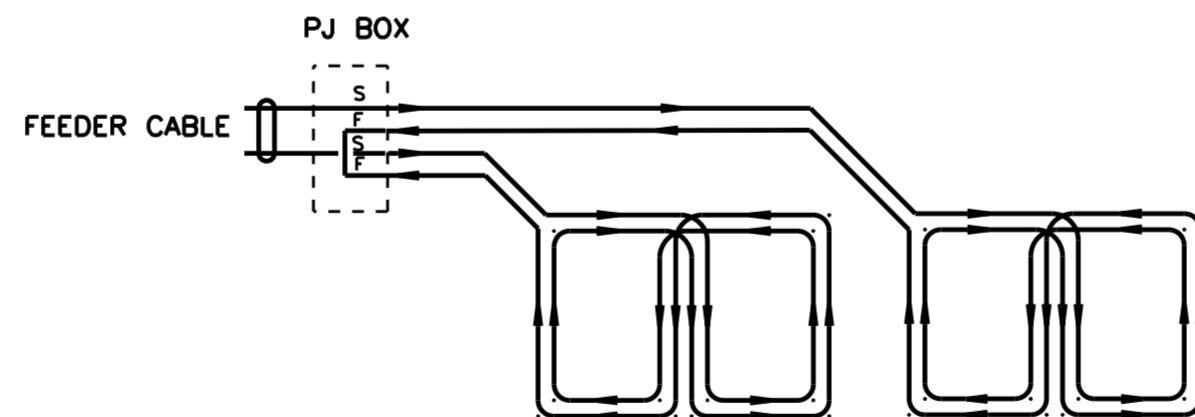


SECTION C-C



DIMENSIONS IN METRES

TYPICAL INSTALLATION OF ADVANCE LOOP DETECTORS (2 LANES)



TYPICAL CONNECTION & WIRING FOR 2 LANES

FOR DETAILS OF WIRING RULES & ALTERNATIVE ENTRY POSITIONS REFER TO PLAN VC005-19. FOR 3 LANE CONNECTIONS REFER TO NOTE 11.

NOTES

1. LOOP DETECTOR CABLE AND FEEDER CABLE SHOULD BE JOINED AND SWEATED IN FOOTPATH PITS. EACH JOINT MUST BE SEPARATELY INSULATED WITH A 6mm PD CAP (RAYCHEM HEAT SHRINK OR APPROVED EQUIVALENT). TO PREVENT THE INGRESS OF MOISTURE AT JOINTS, APPLY METHOD SHOWN ON DRAWING VM417-4 TO FEEDER CABLE.
2. LOOP CABLE SHALL COMPLY WITH AS 2276 PART 3.
3. LOOP FEEDER CABLE SHALL COMPLY WITH AS 2276 PART 2.
4. ALL LOOP CABLE ENDS TO BE LABELLED START (S), FINISH (F) AND NUMBERED AS PER THE TYPICAL INSTALLATION ie FROM LEFT TO RIGHT IN NUMERICAL ORDER REGARDLESS OF PHASE OR PJ BOX POSITION.
5. ALL FEEDER CABLES TO BE LABELLED AT THE CONTROLLER END TO SHOW THE DETECTOR NUMBER AS PER DESIGN PLAN (eg 1, 2 ETC) & AT THE PIT END TO SHOW THE LOCATION OF THE LOOP IN RELATION TO THE APPROACH eg. L, C, R, ETC.
6. THE LOOP CABLE SHALL BE CONTINUOUS (ie NO JOINTS PERMITTED) BETWEEN S AND F.
7. THE LOOP CABLE SHALL RETURN TO A PJ BOX IN THE FOOTPATH ADJACENT TO THE LOOPS.
8. DETAIL 'D' SHOWS THE RECOMMENDED METHOD FOR PROTECTING LOOP CABLES CROSSING A STRESS JOINT.
9. FIT RETAINING WEDGES AT 300 TO 400mm SPACING TO ENSURE LOOP CABLE DOES NOT MOVE WHILE SEALANT IS APPLIED. THE WEDGE MATERIAL TO BE RESILIENT AND BE IMPERVIOUS TO WATER.
10. THE LOOP FEEDER CABLE TO BE CONTINUOUS (ie NO JOINTS PERMITTED)
11. THE LOOPS FROM 2 LANES SHALL BE CONNECTED IN SERIES (AS SHOWN) IN THE PJ BOX. ie FOR 2 LANES L & R IN SERIES, FOR 3 LANES L & C IN SERIES UNLESS OTHERWISE STATED ON THE DESIGN LAYOUT.

'G' ISSUE 20-08-99

J/1 TC2548 PLAN RE-DRAWN. NOTE 7 & 10 ADDED. IN DETAIL 'A' HOLE NO LONGER DRILLED AND EDGES TO BE BLUNTED.

BWT  
'H' ISSUE 30-11-09 DIMENSION 150 TO 200mm FOR CABLE ENTRY DRILL HOLE ADDED TO SECTION B-B.

BWT  
'I' ISSUE 20-8-13 HELAGRIP MARKERS DELETED FROM NOTES 4&5. NOTE 5 REVISED TO CHANGE TO A LOOP LOCATION LABEL AT THE PIT END.

BWT.

| REFERENCE DRAWINGS |          |
|--------------------|----------|
| PRES DET INSTALL   | VC005-17 |
| PJ BOX LID         | VM016-10 |
| PJ BOX PIT         | VC007-4  |
| DET WIRING GUIDE   | VC005-19 |
| DET TEST PROCED    | VC005-22 |

|                     |
|---------------------|
| DRAWN AD 23-12-82   |
| CHECKED BWT         |
| PASSED BWT 29-12-82 |
| APPROVED            |
| F HULSCHER          |
| DATE 01-02-1983     |

ROADS AND TRAFFIC AUTHORITY NSW  
TRAFFIC SIGNALS  
METHOD OF INSTALLATION OF  
ADVANCE DETECTORS

SHEET SIZE  
A2

FILE NO

SCALE

SHEET NO

SUPERSEDES ISSUE F ISSUE 6/11  
REG NO VC005-18