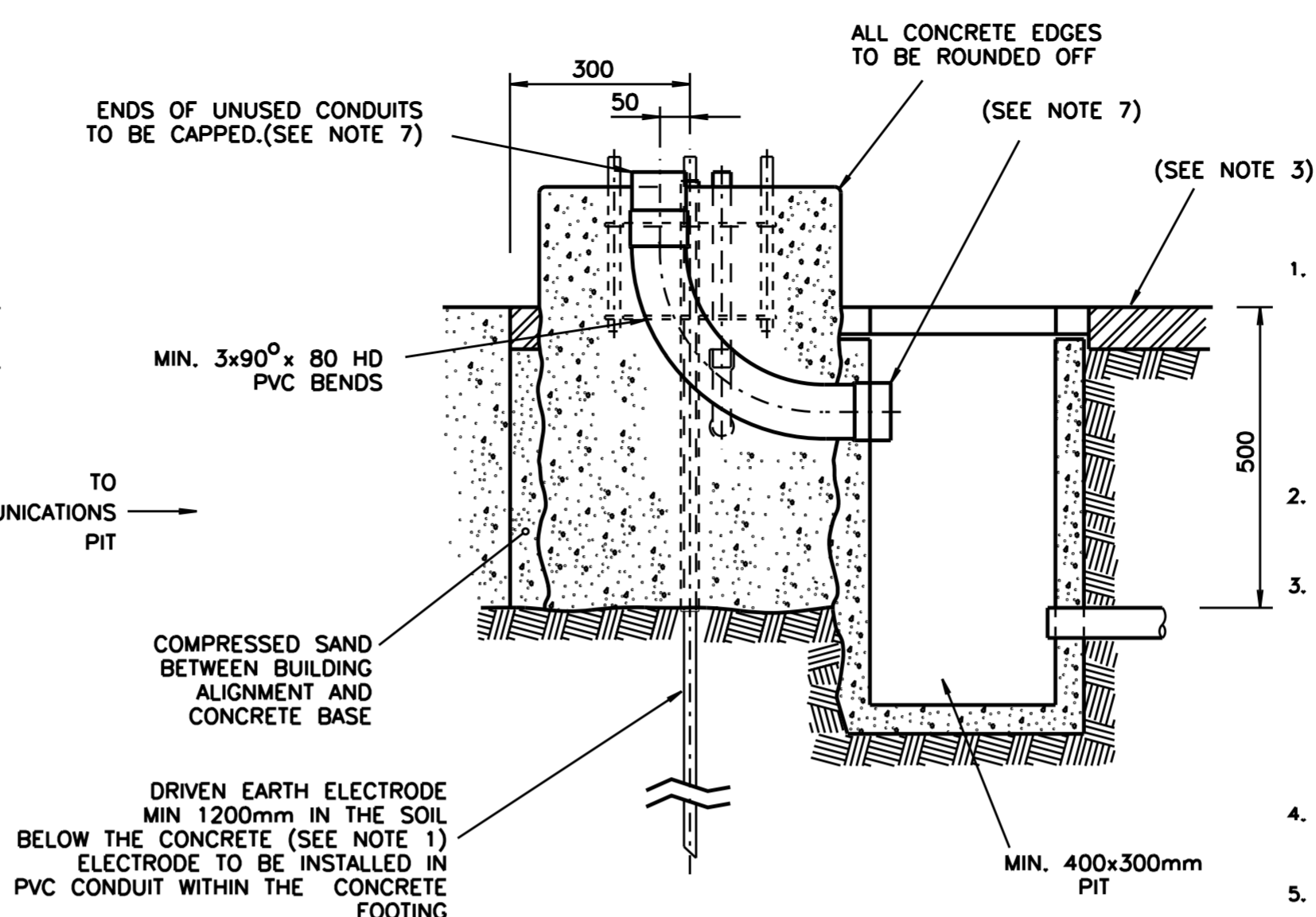
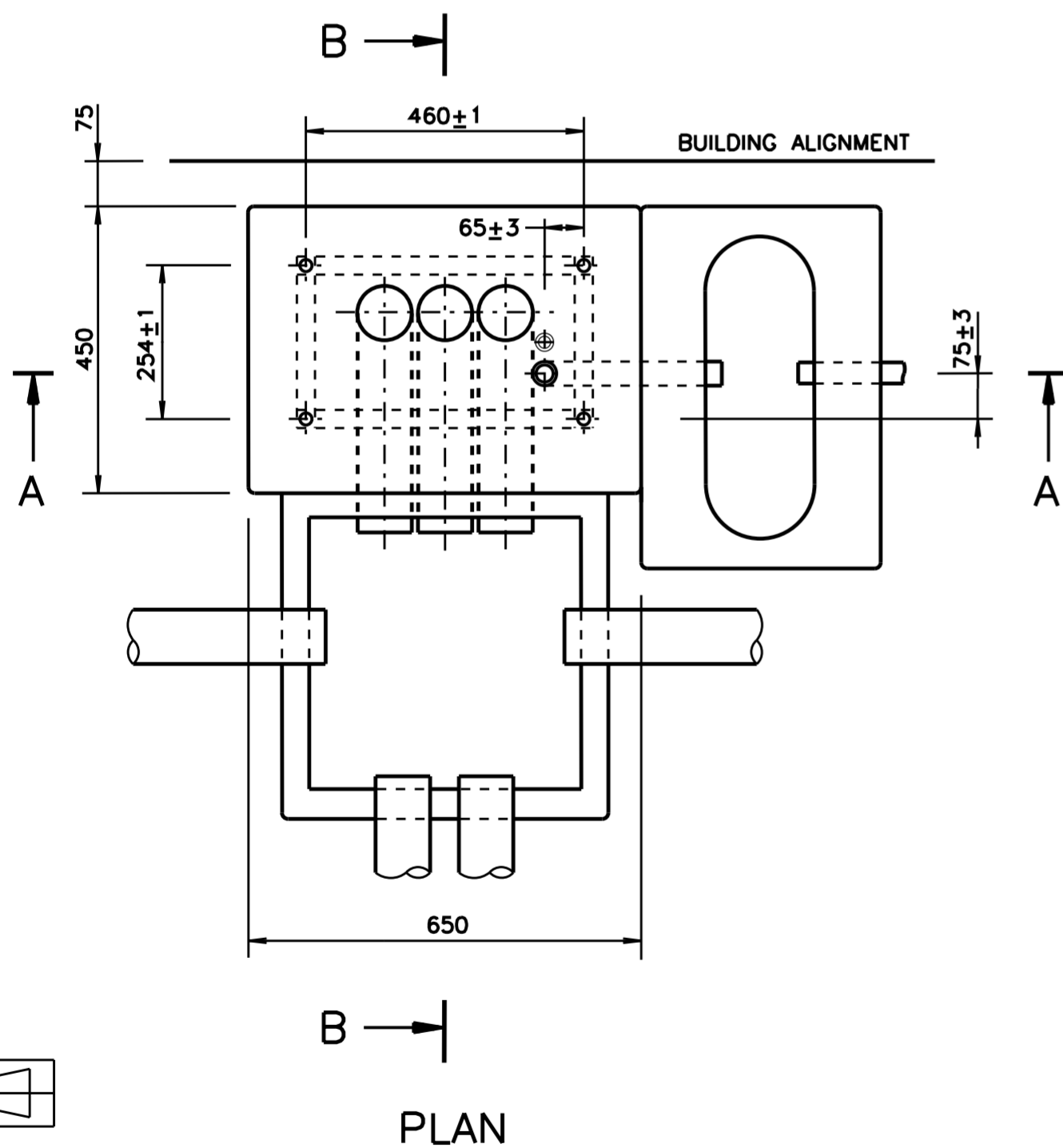


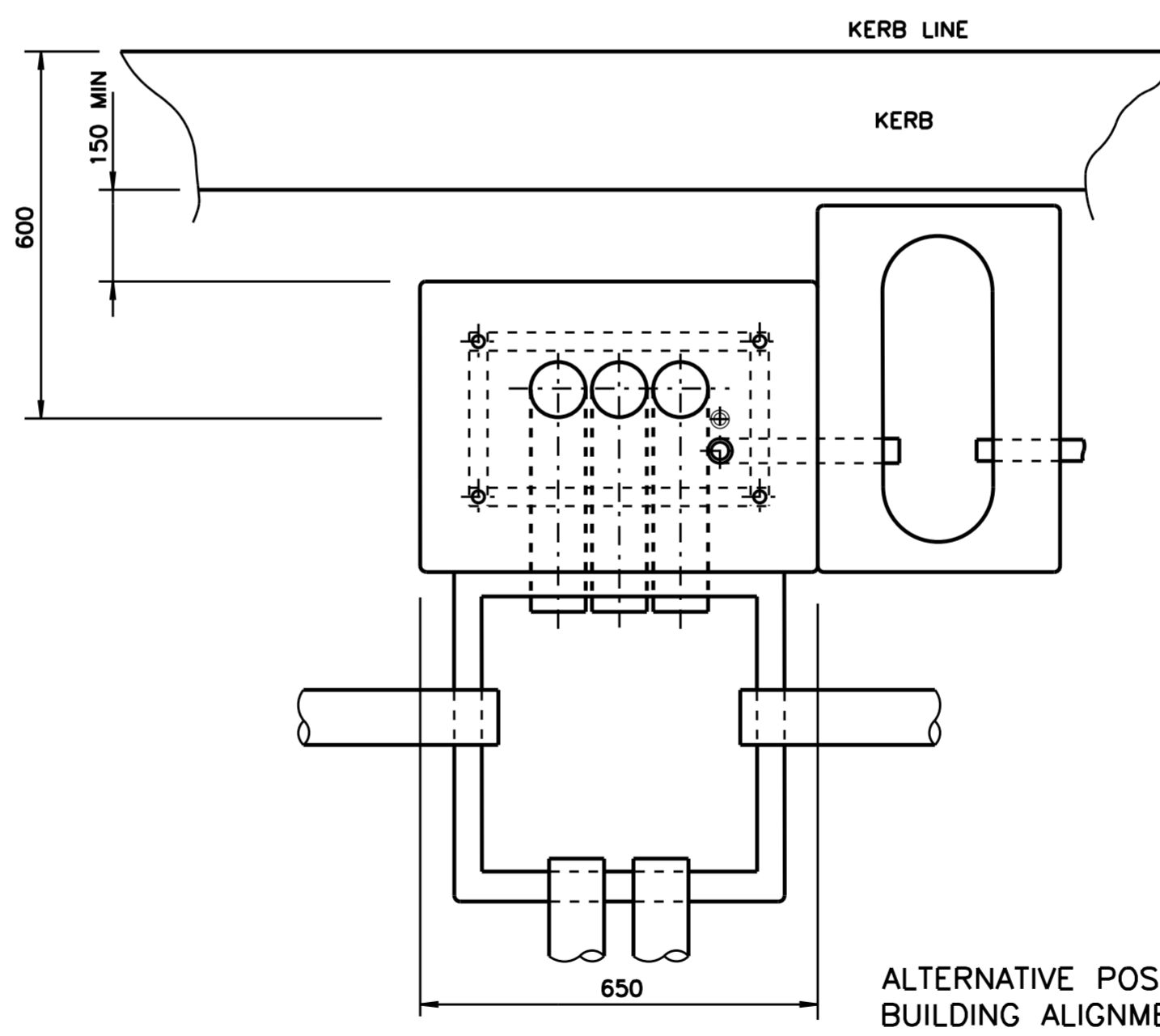
SECTION A-A



SECTION B-B



PLAN



ALTERNATIVE POSITION AT KERB (WHERE STANDARD BUILDING ALIGNMENT POSITION IS NOT POSSIBLE)

NOTES

1. THE DRIVEN TYPE EARTH ELECTRODE SHALL BE Ø 12mm SOLID STAINLESS STEEL ROD, 2000mm MINIMUM IN LENGTH. THE EARTH ELECTRODE INCLUDING A BRASS EARTH CLAMP SHALL CONFORM WITH AND BE INSTALLED IN ACCORDANCE WITH AS/NZS 3000. IF IT IS IMPRACTICAL TO INSTALL THE EARTH ELECTRODE IN THE HOUSING FOOTING, THE ELECTRODE SHALL BE INSTALLED IN A PIT ADJACENT TO THE HOUSING FOOTING.
2. IN SPECIAL CIRCUMSTANCES IT MAY BE NECESSARY FOR THE CONCRETE FOUNDATION TO BE INSTALLED AT RIGHT ANGLES TO THE POSITION SHOWN.
3. IN UNSEALED FOOTWAYS A COURTESY APRON SHALL BE PROVIDED, CONSISTING OF CONCRETE 50mm THICK, EXTENDING 200mm AROUND THE FOOTING EXCEPT IN FRONT OF THE CONTROLLER DOOR(S) WHERE THE APRON SHALL EXTEND 600mm. ON THE JOINTING PIT SIDE IT SHALL EXTEND 400mm AND HAVE A THICKNESS OF 100mm AS SHOWN. A 600mm WIDE PATHWAY SHALL BE PROVIDED FROM THE FRONT OF THE CONTROLLER TO THE NEAREST PATHWAY OR KERB.
4. A JOINTING PIT MANUFACTURED TO ACA TECHNICAL STANDARD 008 WITH CONCRETE APRON TO BE INSTALLED TO AUSTEL TECHNICAL STANDARD 009.
5. A Ø20 PVC CONDUIT, FIXED RIGIDLY INTO BELLMOUTH OF CONDUIT BEND, SHALL PROTRUDE ABOVE CONCRETE FOOTING SURFACE AS SHOWN TO FULLY ENGAGE THE CONDUIT FROM THE CONTROLLER HOUSING (REFER DRG VM621-31). CONDUIT AND BEND MUST COMPLY WITH ACA TECHNICAL STANDARD 008.
6. WHEN INSTALLING THE CONTROLLER, INSERT AN INSULATED DRAW-WIRE INTO THE TELECOMMUNICATIONS CABLE ENTRY AND TIE ONE END SECURELY TO THE HOOK IN THE LINK BOX.
7. THE POINT WHERE THE CABLES ENTER THE CONDUITS IN THE ADJACENT PIT SHALL BE GAS TIGHT SEALED. THE SEALING MEDIUM SHALL NOT BE SUBJECT TO DECAY IN THE GROUND AND SHALL NOT IMPAIR THE QUALITIES OF THE CABLE OR THE CONDUIT. THE CONSISTENCY OF THE MATERIAL SHALL BE SUCH AS TO ENABLE IT TO BE REMOVED READILY WITHOUT RISK OF DAMAGE TO CABLE. MATERIALS TO BE USED ARE 'DENSO' OR 'CORROSEAL' OR AN APPROVED EQUIVALENT.
8. WHEN THE STANDARD BUILDING ALIGNMENT POSITION IS NOT AVAILABLE AND WHEN THE HOUSING CENTRE IS WITHIN 900mm FROM THE KERB LINE, FINISH THE FOOTING AND THE PIT WITH A 50mm THICK CONCRETE EXTENSION TO THE INSIDE KERB EDGE, MEETING THE KERB STONE WITH A MASTIC EXPANSION JOINT. MASTIC EXPANSION JOINTS ARE ALSO TO BE BETWEEN THE CONCRETE TOP AND ANY OTHER CONCRETE SURFACE IN ANY HOUSING LOCATION.
9. TOLERANCE UNLESS OTHERWISE STATED: ±20mm.
10. WHEN THE FOOTING IS USED FOR A CCTV HOUSING ADJACENT TO THE CONTROLLER FOOTING, A COMMON CABLE PIT & JOINTING PIT CAN BE USED WITHOUT THE NEED FOR THE 20mm DIA WHITE CONDUIT ENTRY OR THE EARTH ELECTRODE. THE NUMBER OF 80mm CONDUIT ENTRIES MAY BE REDUCED TO ONE FOR ALL CCTV FOOTINGS. ALL SUPPLY & CCTV ETHERNET CABLES PASSING THROUGH THE PIT & INTO THE HOUSINGS ARE TO BE SLEEVED WITH FLEXIBLE CONDUIT & LABELLED ACCORDINGLY.

DIMENSIONS IN MILLIMETRES

A ORIGINAL ISSUE B' ISSUE: - 14/12/12 EARTH ELECTRODE INSTALLED IN PVC PIPE THROUGH FOOTING ADDED. LC. BWT.	C' ISSUE: - 14/09/13 EARTH ELECTRODE DETAILS IN NOTE 1 REVISED. LC. BWT.	REFERENCE DRAWINGS	DRAWN L. CLAY 13-08-09	ROADS AND TRAFFIC AUTHORITY NSW TRAFFIC SIGNALS	SHEET SIZE A2	FILE NO	SCALE 1:10	SHEET NO
		BOLT ASSEMBLY VC002-56	CHECKED I. HAYES 14-08-09	FOOTING FOR GROUND-MOUNTED SMALL CONTROLLER & CCTV HOUSINGS	SUPERSEDES -	ISSUE A/B/C	REG NO	VC002-76
			PASSED B. TAYLOR 17-08-09					
			APPROVED S. SRIVASTAVA 17-08-09					
			DATE					