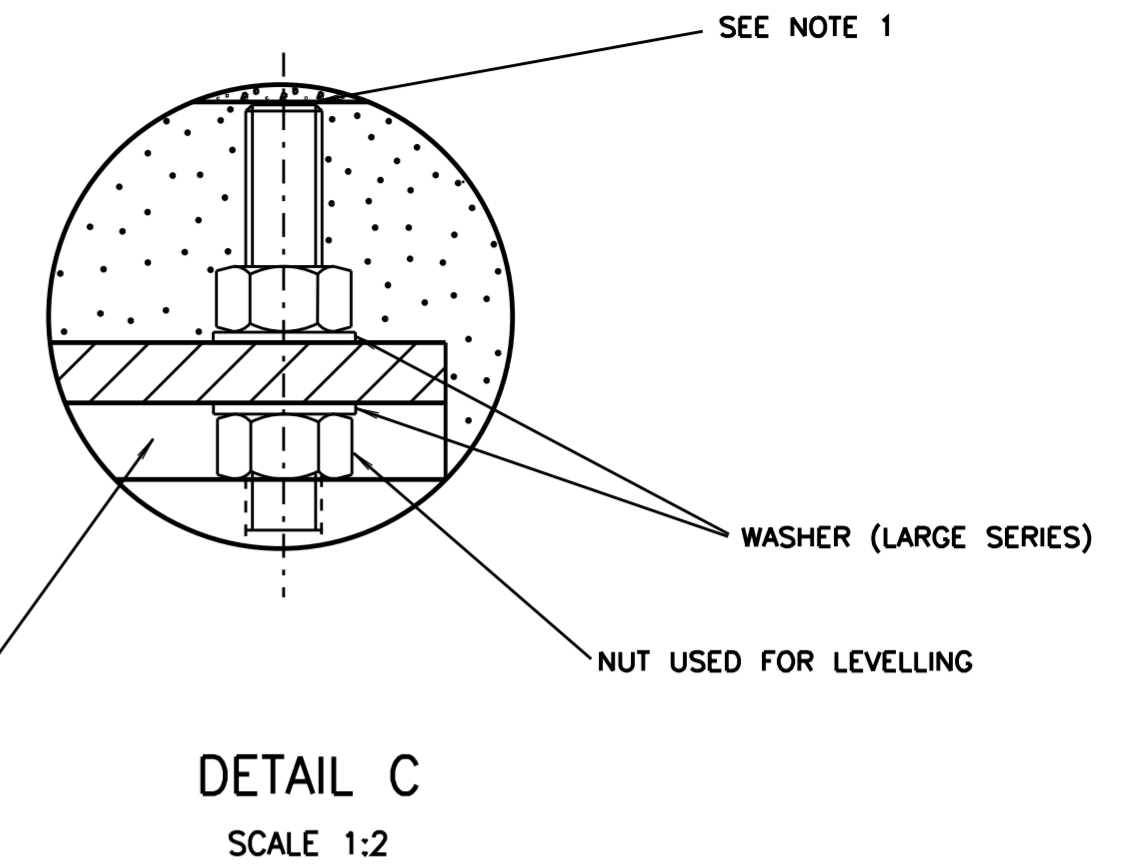
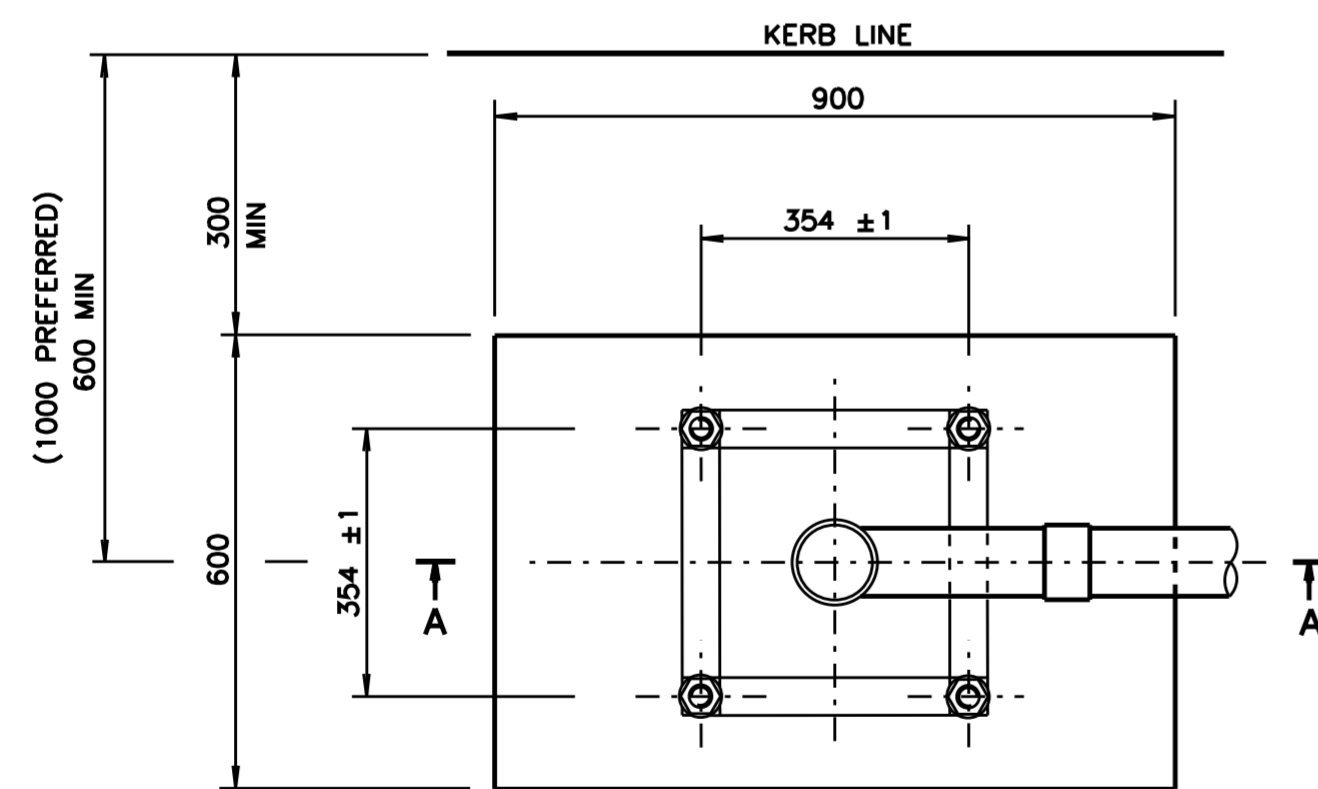


SECTION A-A



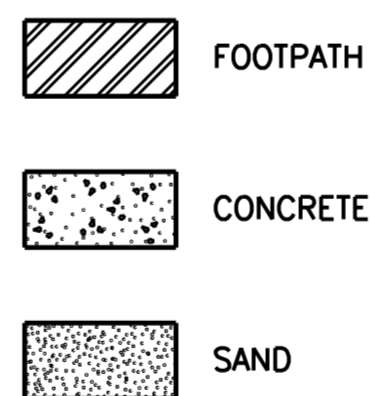
NOTES

1. A MINIMUM OF 3 BOLT THREADS TO PROTRUDE OUT OF THE NUT. THE EXPOSED THREAD IS TO BE COVERED WITH PVC TUBE OR TAPE.
2. FINISH MAST ARM MOUNTING AREA WITH 50mm CONCRETE 600x600mm. ASPHALT SHALL BE USED INSTEAD OF CONCRETE WHEN REQUIRED BY THE MUNICIPAL AUTHORITY.
3. THE TOTAL FOOTING DEPTH OF 950mm MAY NEED TO BE INCREASED FOR MAST ARMS INSTALLED IN UNPAVED AREAS WITH UNSTABLE SOIL.
4. MASTIC EXPANSION JOINTS TO BE USED BETWEEN THE TOP OF MAST ARM FOOTING AND ALL CONCRETE SURFACES INCLUDING PAVEMENT JUNCTION PITS.
5. THE COMPLETE FOOTING TO BE CAST IN SITU IN ONE SINGLE CONCRETE POURING OPERATION. PRECAST FOOTING ARE NOT TO BE USED.
6. IN SITUATIONS WHERE THE FOOTING IS IN BACKFILL, eg THE FINISHED GROUND LEVEL BEING HIGHER THAN THE EXISTING GROUND LEVEL, THE FOOTING SHALL BE BUILT AFTER THE GROUND HAS BEEN BACKFILLED AND COMPACTED TO THE REQUIRED SOIL STRENGTH.
7. WHERE THE FOOTING IS INSTALLED IN AN UNSEALED FOOTWAY, A SUITABLE SQUARE MASTIC EXPANSION JOINT BOX FRAME SHALL BE PROVIDED FOR THE FULL 150mm FROM THE TOP OF THE CONCRETE FOOTING TO PREVENT THE SAND FROM BEING WASHED AWAY UNDER THE CONCRETE COVERING.



SECTION B-B  
(MAST ARM & TOP COVERING)

LEGEND



DIMENSIONS ARE IN MILLIMETRES

A ORIGINAL ISSUE  
B ISSUE 05-06-2015  
AREA OF CONCRETE COVER  
REDUCED TO 600x600mm.  
NOTES 5, 6 & 7 ADDED.  
DB BWT

REFERENCE DRAWINGS		DRAWN	I. HAYES 02-07-2009
TYPE 4 MAST ARM	VM203-26	CHECKED	B. TAYLOR 08-07-2009
TYP EXCAVATION	VC001-9	PASSED	B. TAYLOR 08-07-2009
BOLT ASSEMBLY	VC002-50	APPROVED	S. SRIVASTAVA MANAGER STDS & QUAL DATE 08-07-2009

ROADS AND MARITIME SERVICES  
TRAFFIC SIGNALS

FOOTING FOR  
TYPE 4 MAST ARM

SHEET SIZE	FILE NO	SCALE	SHEET NO
A2		1:10	
SUPERSEDES: -		ISSUE	B
REG NO		VC002-75	