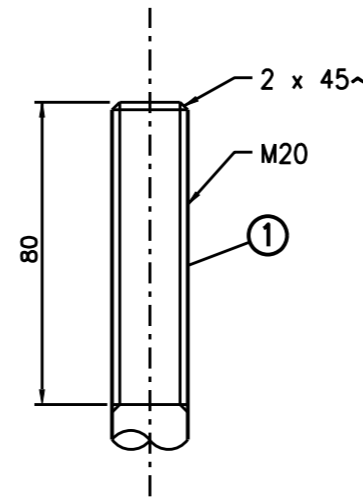
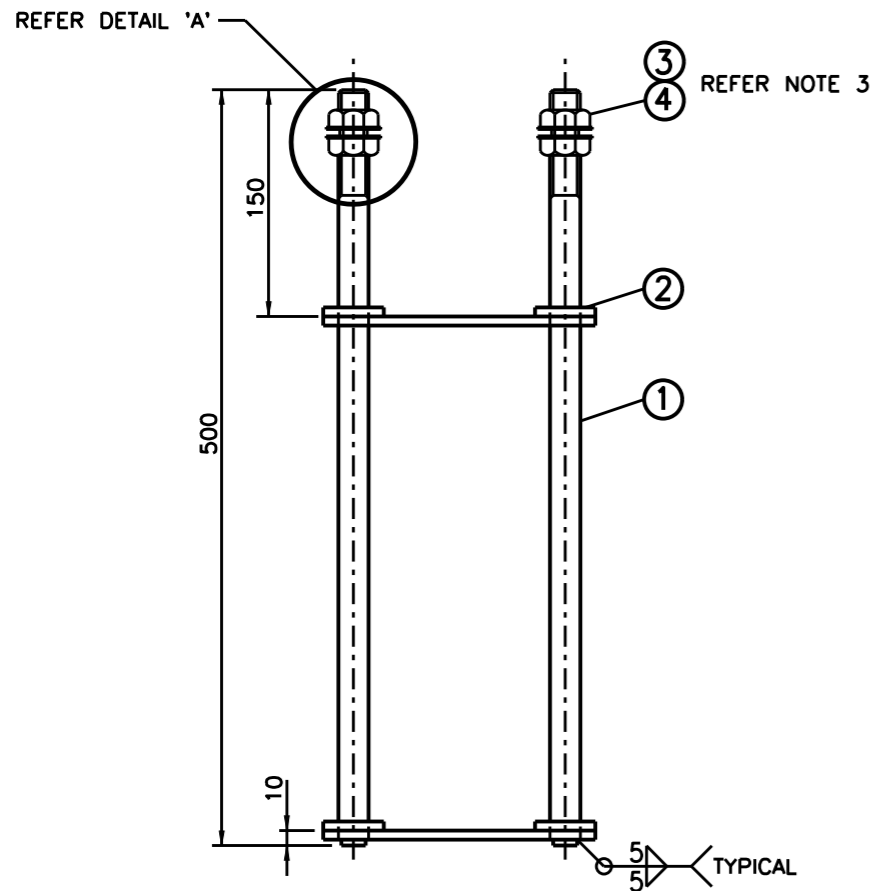


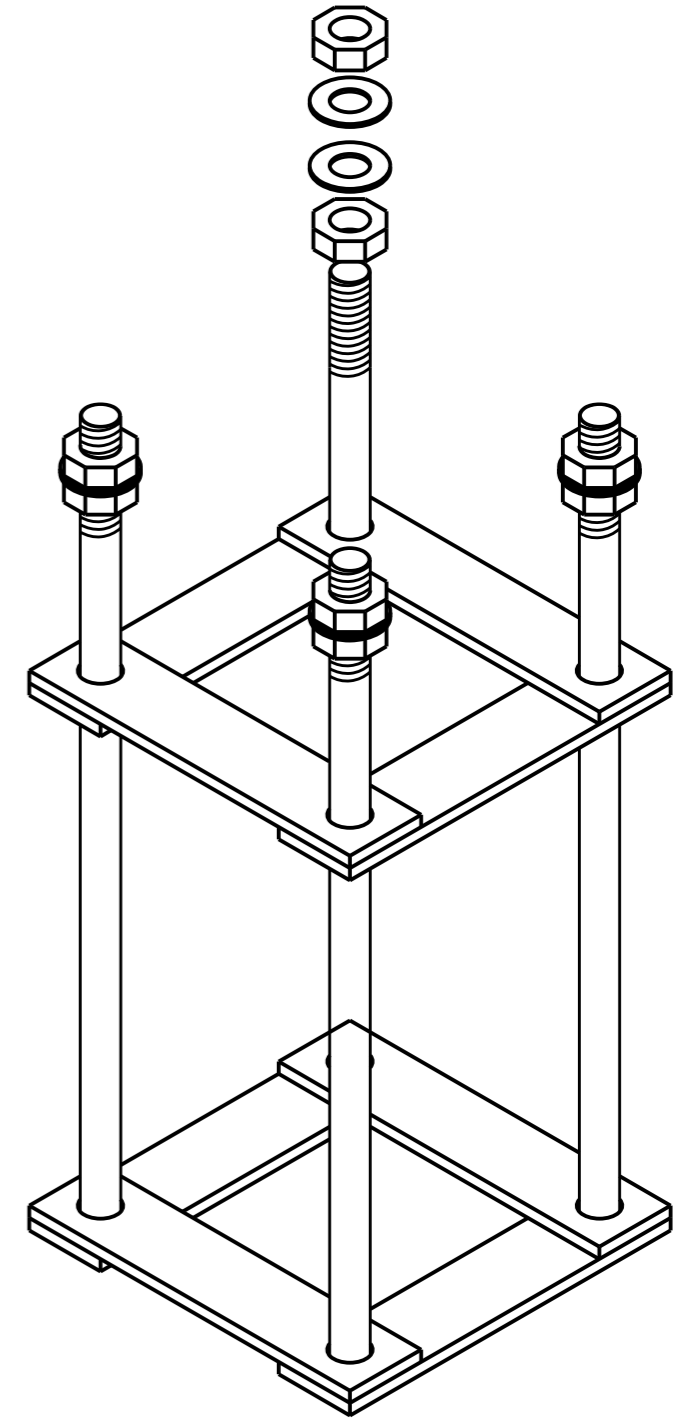
PLAN
SCALE 1:5



DETAIL 'A'
SCALE 1:2



ELEVATION
SCALE 1:5



DIMETRIC VIEW
N.T.S.

NOTES:

1. ALL WELDING SHALL BE IN ACCORDANCE WITH AS/NZS 1554 PART 1.
2. AFTER WELDING, ITEMS 1 & 2 TO BE HOT DIPPED GALVANIZED IN ACCORDANCE WITH AS/NZS 4680 AND THREADED ENDS OF ITEM 1 IN ACCORDANCE WITH AS 1214.
3. ITEMS 3 & 4 SHALL BE SUPPLIED AND FITTED (AS SHOWN) BY THE MANUFACTURER.
4. MANUFACTURER'S IDENTIFICATION AND DATE OF MANUFACTURE TO BE MARKED CLEARLY, INDELIBLY AND WATERPROOF.
5. THE GALVANIZING SURFACE SHALL BE FREE FROM SHARP PROJECTIONS, DROSS AND DAGS.
6. TOLERANCE: $\pm 2\text{mm}$ UNLESS OTHERWISE INDICATED.

ITEM	DESCRIPTION	MATERIAL	FINISH	QTY
4	FLAT WASHER M20 NORMAL SERIES TO AS 1237	M.S.	GALV. to AS/NZS 4680	8
3	HEX. NUT M20 TO AS/NZS 1112	M.S.	GALV. to AS/NZS 1214	8
2	FLAT BAR 40x6 TO AS/NZS 3679	M.S.	GALV. to AS/NZS 4680	8
1	ROD $\phi 20$ STEEL ROUND TO AS/NZS 3679	M.S.	GALV. to AS/NZS 4680	4

A ORIGINAL ISSUE
B: ISSUE, DATE: 2-11-2010
ITEM 4 WAS LARGE SERIES.
AK. B.W.T.

REFERENCE DRAWINGS	
Post Footing	VC002-66
Post Type 13	VM202-20
SUPPLY CATALOGUE No. 18234156	

ROADS AND TRAFFIC AUTHORITY OF NSW
TRAFFIC SIGNALS
**HOLDING DOWN BOLT ASSEMBLY
FOR TYPE 13
PUSH BUTTON POST**

SCALE AS SHOWN	
SUPERSEDES:	
DRAWN	T.K. 02/07/03
CHECKED	IH 2003-10-02
PASSED	B. TAYLOR 2003-11-25

APPROVED: 2003-11-27 S. SRIVASTAVA MANAGER EQUIPMENT & STDS	
ISSUE	<input checked="" type="checkbox"/> A <input type="checkbox"/> B
VC002-67	