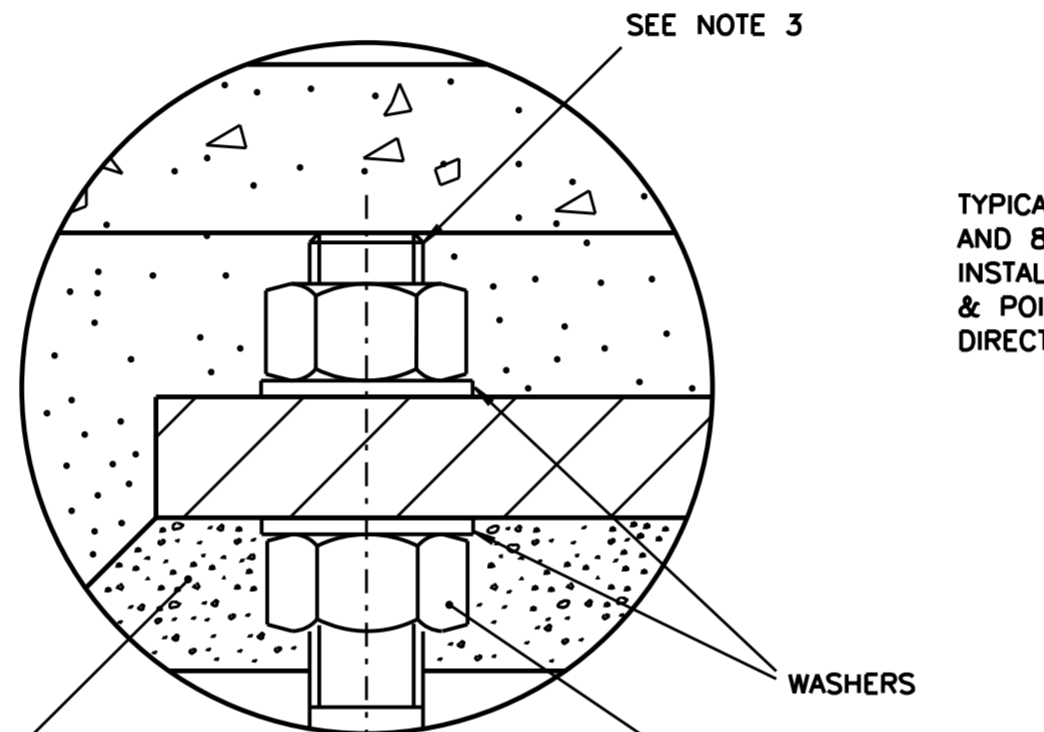
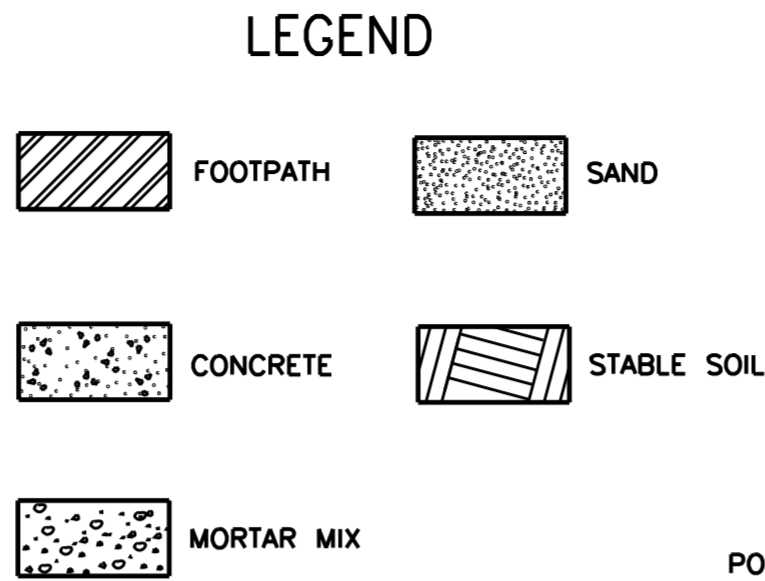
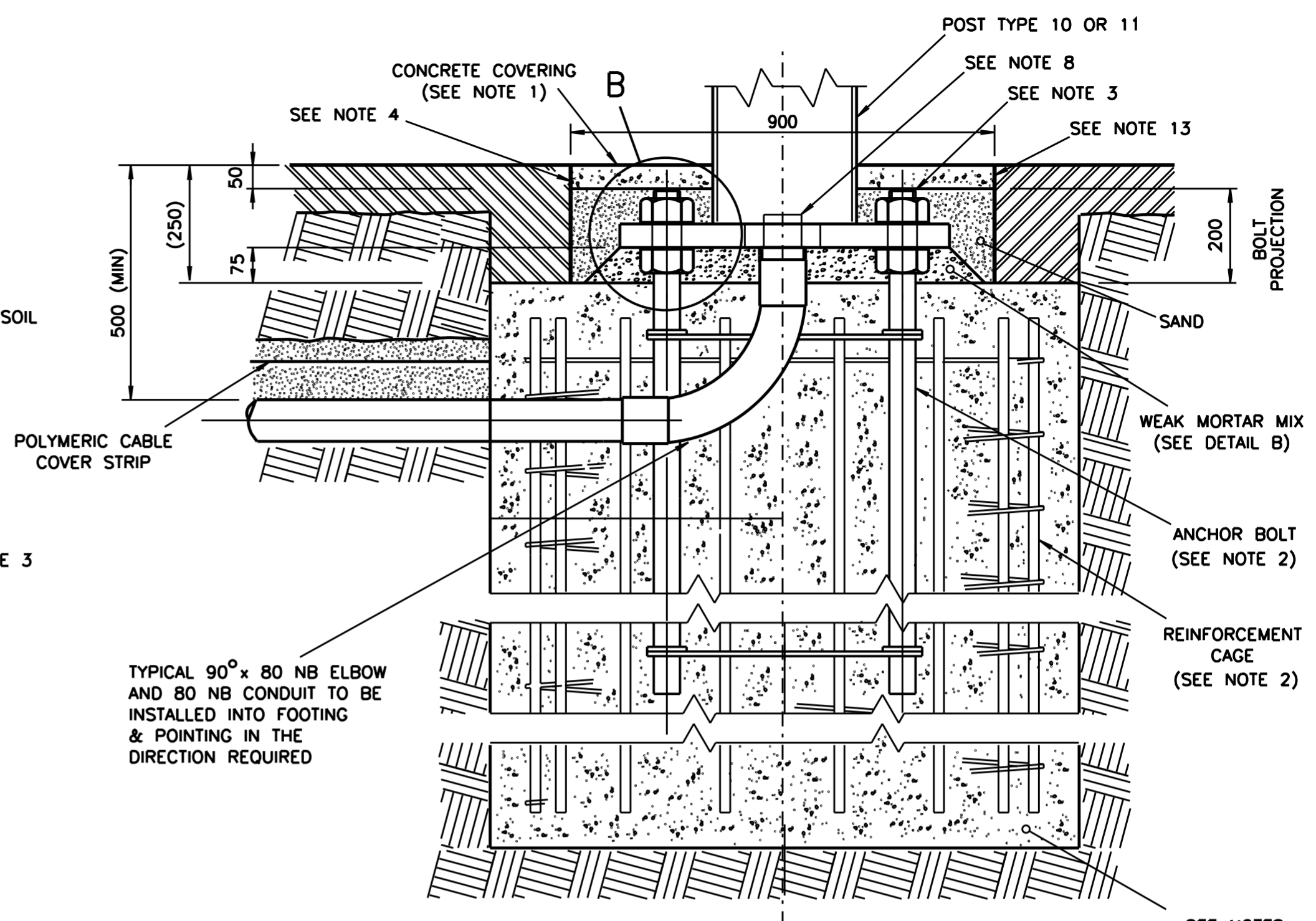


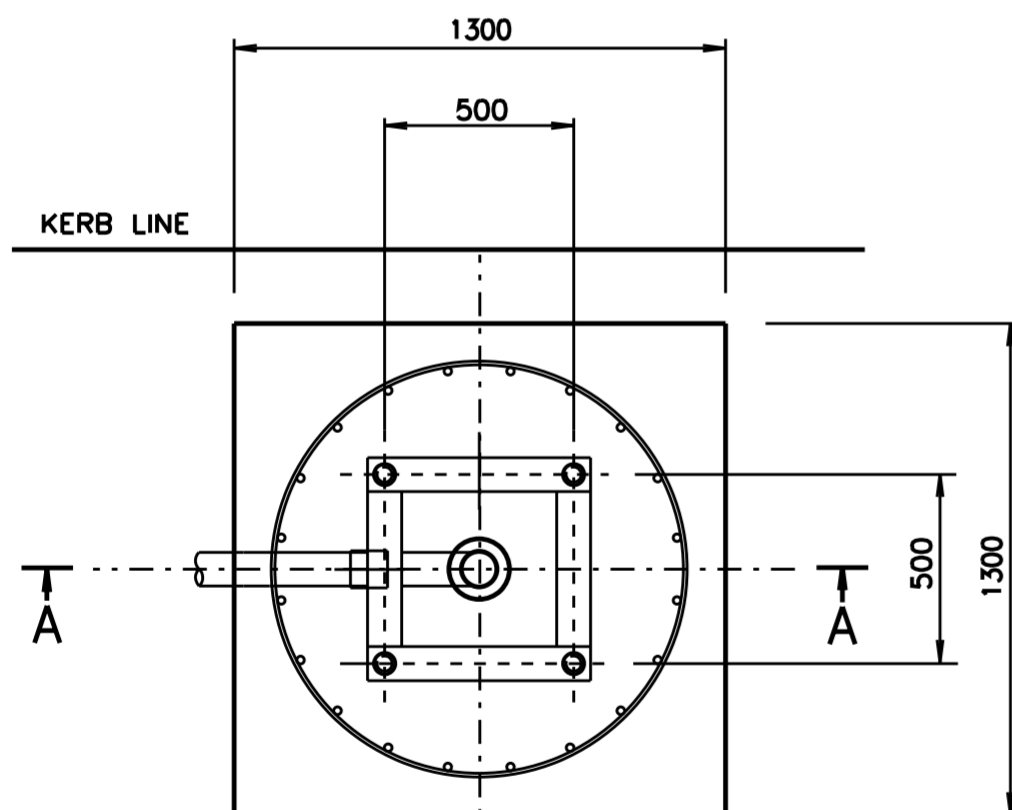
SIDE VIEW
SCALE 1:20



DETAIL B
(NOT TO SCALE)



SECTION A-A
SCALE 1:10



PLAN VIEW

POST, NUTS & WASHERS OMITTED FROM THIS VIEW
SCALE 1:20

NOTES:

1. FINISH MAST ARM MOUNTING AREA WITH 50mm OF CONCRETE, 900x900mm. ASPHALT SHALL BE USED INSTEAD OF CONCRETE WHEN REQUIRED BY THE MUNICIPAL AUTHORITY.
2. ANCHOR BOLT & REINFORCEMENT CAGE DETAILS SHOWN ON DRAWING No.ME10590.
3. A MINIMUM OF 4 BOLT THREADS ARE TO PROTRUDE OUT OF THE NUT. THE EXPOSED THREAD IS TO BE COVERED WITH PVC TUBE OR TAPE.
4. MASTIC (OR AN APPROVED EQUIVALENT) EXPANSION JOINTS ARE TO BE USED BETWEEN THE TOP OF THE POST FOOTING AND ALL CONCRETE SURFACES, INCLUDING PAVEMENT JUNCTION PITS.
5. THE COMPLETE FOOTING MUST BE CAST IN ONE SINGLE CONCRETE POURING OPERATION. PRECAST FOOTINGS ARE NOT TO BE USED.
6. THE FOOTING SHALL BE INSTALLED IN PREVIOUSLY UNDISTURBED AND STABLE SOIL, AND IN AN EXCAVATION SPECIALLY MADE AND INTENDED ONLY FOR THE FOOTING.
7. NO FORMWORK SHALL BE USED FOR THE FOOTING.
8. INSERT A SHORT PIECE OF DUCT INTO THE BEND TO ENSURE A CLEAR CABLE ENTRY.
9. FOOTING DESIGN FOR ALLOWABLE SOIL BEARING CAPACITY $q_u = 150\text{kpa}$.
10. IF DIFFERENT SOIL CONDITIONS ARE ENCOUNTERED ON SITE, THE FOOTING SHALL BE REDESIGNED.
11. CONCRETE SHALL BE GRADE N32E7 IN ACCORDANCE WITH AS1379 WITH A MAXIMUM AGGREGATE SIZE OF 20mm. THE SLUMP SHALL BE 80mm. NOMINAL.
12. IN SITUATIONS WHERE THE FOOTING IS IN BACKFILL, eg THE FINISHED GROUND LEVEL BEING HIGHER THAN THE EXISTING GROUND LEVEL, THE FOOTING SHALL BE BUILT AFTER THE GROUND HAS BEEN BACKFILLED AND COMPACTED TO THE REQUIRED SOIL STRENGTH.
13. WHERE THE FOOTING IS INSTALLED IN AN UNSEALED FOOTWAY, A SUITABLE SQUARE MASTIC EXPANSION JOINT BOX FRAME SHALL BE PROVIDED FOR THE FULL 250mm FROM THE TOP OF THE CONCRETE FOOTING TO PREVENT THE SAND FROM BEING WASHED AWAY UNDER THE CONCRETE COVERING.

| | | | | |
|------------------|--|---|--|---|
| A ORIGINAL ISSUE | B ISSUE 2003-02-03 NOTE 3 ALTERED - REF TO GREASE DELETED & MIN 4 THREADS ADDED. BWT | C ISSUE 2004-05-26 CONCRETE FOOTING DEPTH WAS 1750. REINFORCEMENT CAGE WAS 1600 LONG. FOOTING WAS 1250 DIA. TRIM BACK TOP DELETED. NOTES 9 AND 10 ADDED. CB | D ISSUE 21-10-2011 NOTE 11 RE CONCRETE GRADE ADDED. A.K. BWT | E ISSUE 04-06-2015 AREA OF CONCRETE COVER REDUCED TO 900x900mm. NOTES 12 & 13 ADDED. D.B. BWT |
|------------------|--|---|--|---|

| | |
|----------------------------|----------------------|
| REFERENCE DRAWINGS | DRAWN RVC 13-11-02 |
| REINFORCEMENT CAGE ME10590 | CHECKED BWT 14-11-02 |
| | PASSED BWT 14-11-02 |
| | APPROVED |
| | S. K. SRIVASTAVA |
| | DATE 14-11-02 |

| | |
|---|--|
| ROADS AND MARITIME SERVICES | |
| TRAFFIC SIGNALS | |
| FOOTING FOR TYPE 10 & 11 MAST ARMS | |

| | | | |
|------------|---------|-----------------|----------|
| SHEET SIZE | FILE NO | SCALE | SHEET NO |
| A2 | - | AS SHOWN | |
| SUPERSEDES | | ISSUE | |
| REG NO | | VC002-65 | |