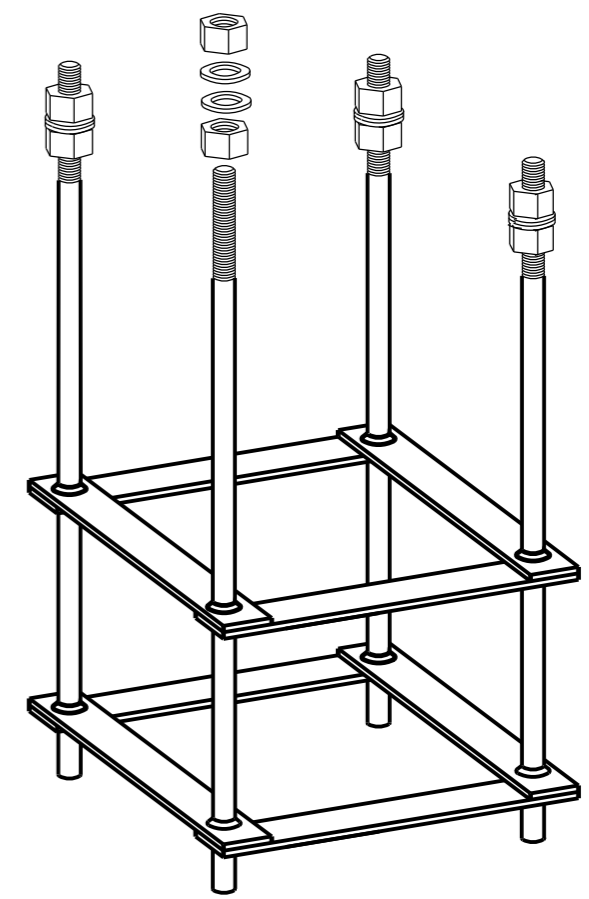
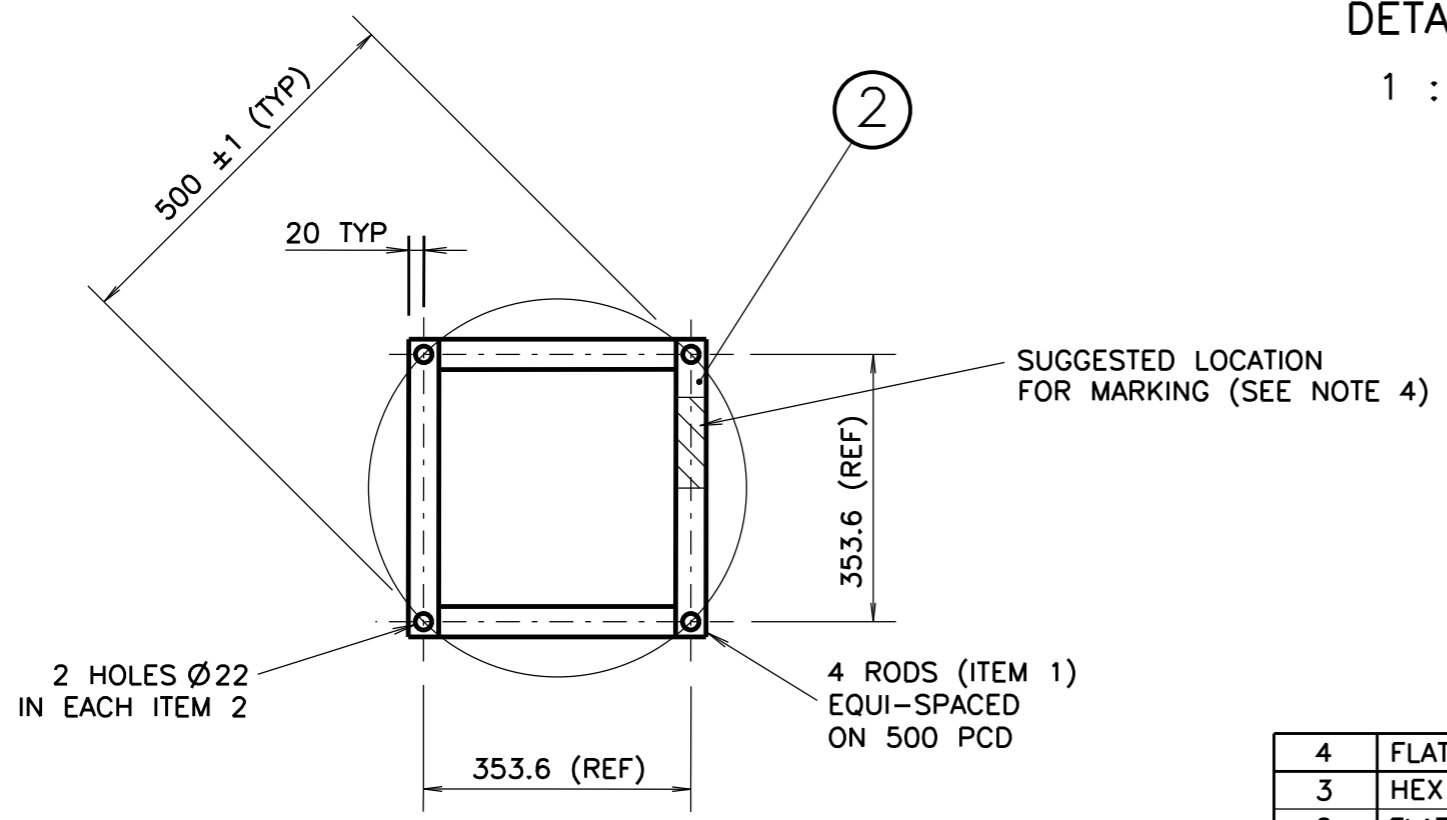


DETAIL A
1 : 2



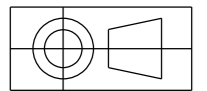
DIMETRIC VIEW



NOTES

1. ALL WELDING SHALL BE IN ACCORDANCE WITH AS/NZS 1554 PART 1.
2. AFTER WELDING, ITEMS 1 & 2 TO BE HOT DIP GALVANISED IN ACCORDANCE WITH AS/NZS 4680 & THREADED ENDS OF ITEM 1 IN ACCORDANCE WITH AS 1214.
3. ITEMS 3 & 4 SHALL BE SUPPLIED & FITTED (AS SHOWN) BY THE MANUFACTURER.
4. MANUFACTURERS IDENTIFICATION & DATE OF MANUFACTURE TO BE MARKED CLEARLY, INDELIBLY & WATERPROOF.
5. THE GALVANISING SURFACE SHALL BE FREE FROM SHARP PROJECTIONS, DROSS AND DAGS.
6. TOLERANCE: ±2mm UNLESS OTHERWISE INDICATED.

ITEM	DESCRIPTION	MATERIAL	FINISH	QTY
4	FLAT WASHER M20 LARGE SERIES TO AS 1237	MILD STEEL	GALVANISED TO AS/NZS 4680	8
3	HEX NUT M20 TO AS/NZS 1112	MILD STEEL	GALVANISED TO AS/NZS 1214	8
2	FLAT BAR 40 X 6 TO AS/NZS 3679	MILD STEEL	GALVANISED TO AS/NZS 4680	4
1	ROD Ø20 STEEL ROUND TO AS/NZS 3679	MILD STEEL	GALVANISED TO AS/NZS 4680	4



DIMENSIONS ARE IN MILLIMETRES

C ISSUE 08-12-99
J/I TC2390 PLAN
REDRAWN. WASHER
(ITEM 4) IS NOW
LARGE SERIES.
QUANTITY WAS 4.
NOTE 6 ADDED.
RVC BWT

D ISSUE:
ITEM 2 WAS CROSS
BRACED.
F.P. 19.02.09 BWT

E ISSUE 10-03-2016
'ALTERNATIVE METHOD'
DELETED FROM TITLE.
IH BWT

REFERENCE PLANS	
POST FOOTING	VC002-71
SUPPLY CATALOGUE NO 18234173	

ROADS AND MARITIME SERVICES
TRAFFIC SIGNALS
**HOLDING DOWN BOLT ASSEMBLY
FOR TYPE 2 POST**

SCALE 1 : 10 OR AS SHOWN	
SUPERSEDES: ISSUE B	
DRAWN	GC 26-09-84
CHECKED	RB 25-10-84
PASSED	BWT 10-02-86

APPROVED: 10-02-1986 FR HULSCHER SUPERVISING ENGINEER	
ISSUE	<input checked="" type="checkbox"/> <input checked="" type="checkbox"/> <input type="checkbox"/> <input type="checkbox"/> <input type="checkbox"/> <input type="checkbox"/>
VC002-50	